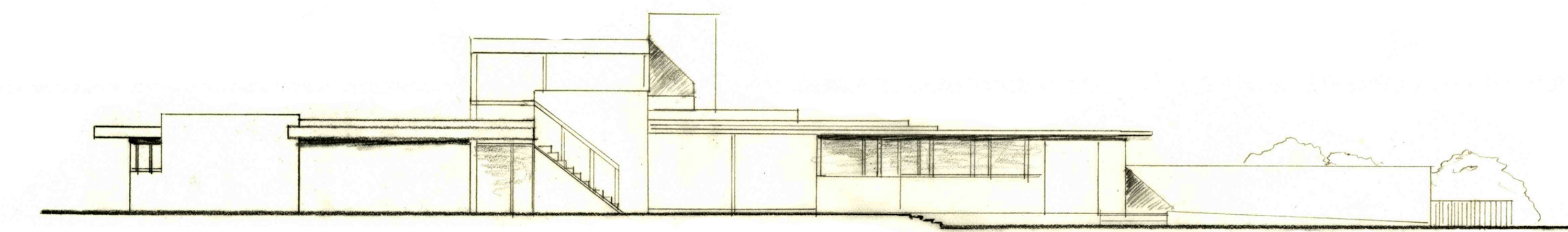
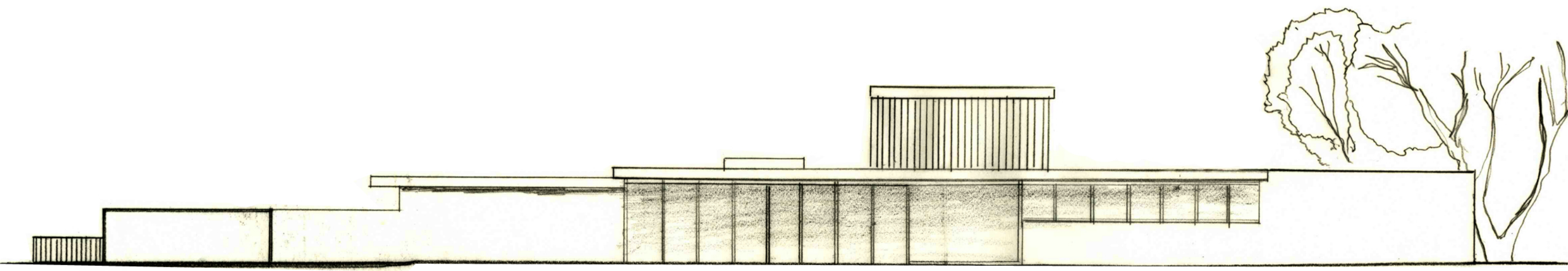


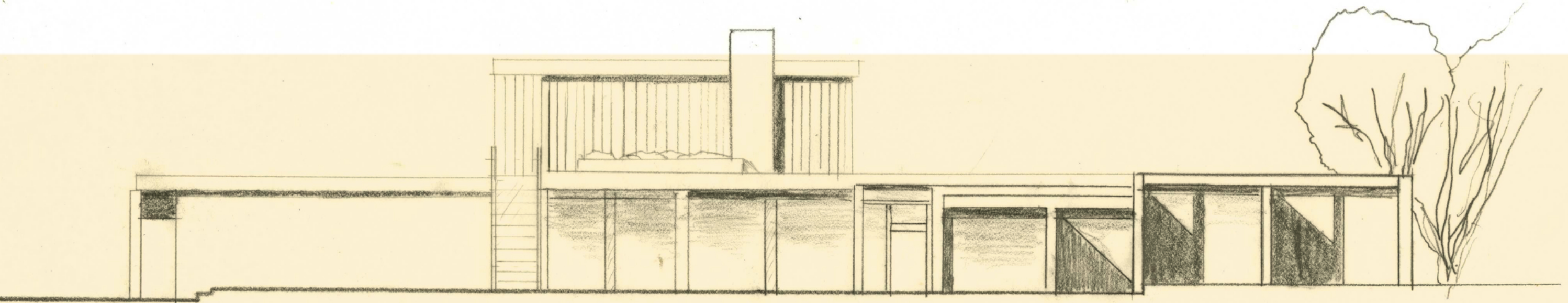
FLOOR PLAN Scale 1/8" = 1'-0"



SOUTH ELEVATION Scale 1/8" = 1'-0"



NORTH ELEVATION Scale 1/8" = 1'-0"



EAST ELEVATION Scale 1/8" = 1'-0"

formed by two intersecting axes, creating pinwheel plan.

a spreading roof and glass walls which open on to paved courtyard areas creates "virtual volume", breaking the barrier between in and out.

the massiveness of house's rock and stoned walls is lighten by the glass walls and by the "floating" quality of silver-gray metal trim.

with the ripple and quite reflection of water, changes in climates of desert, and especailly the shadows and reflectios on metal fascia,

KAUFMANN DESERT HOUSE

Palm Springs, California, 1946

Richard Neutra

