

MIT OpenCourseWare
<http://ocw.mit.edu>

11.307 Beijing Urban Design Studio
Summer 2008

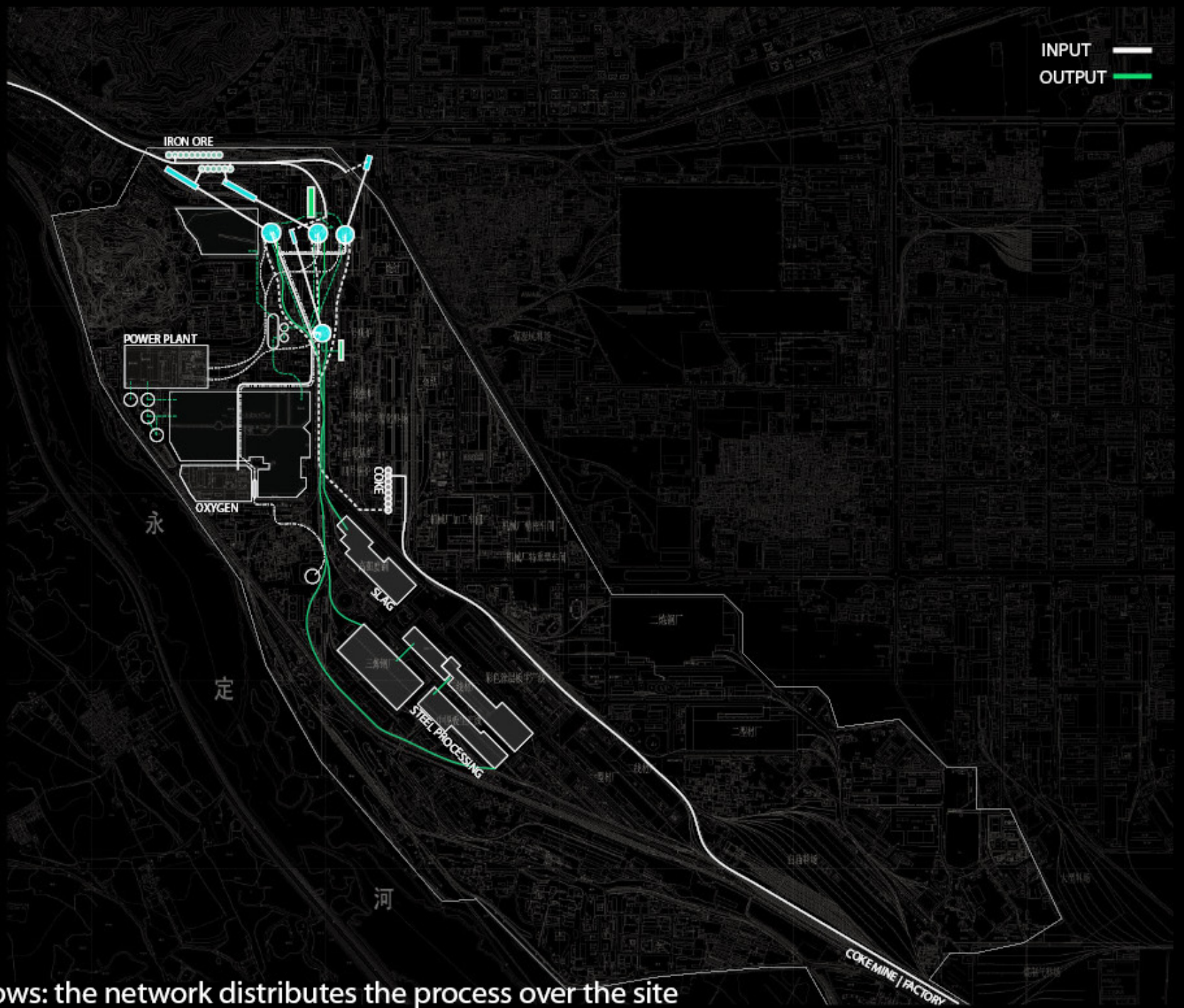
For information about citing these materials or our Terms of Use, visit: <http://ocw.mit.edu/terms>.



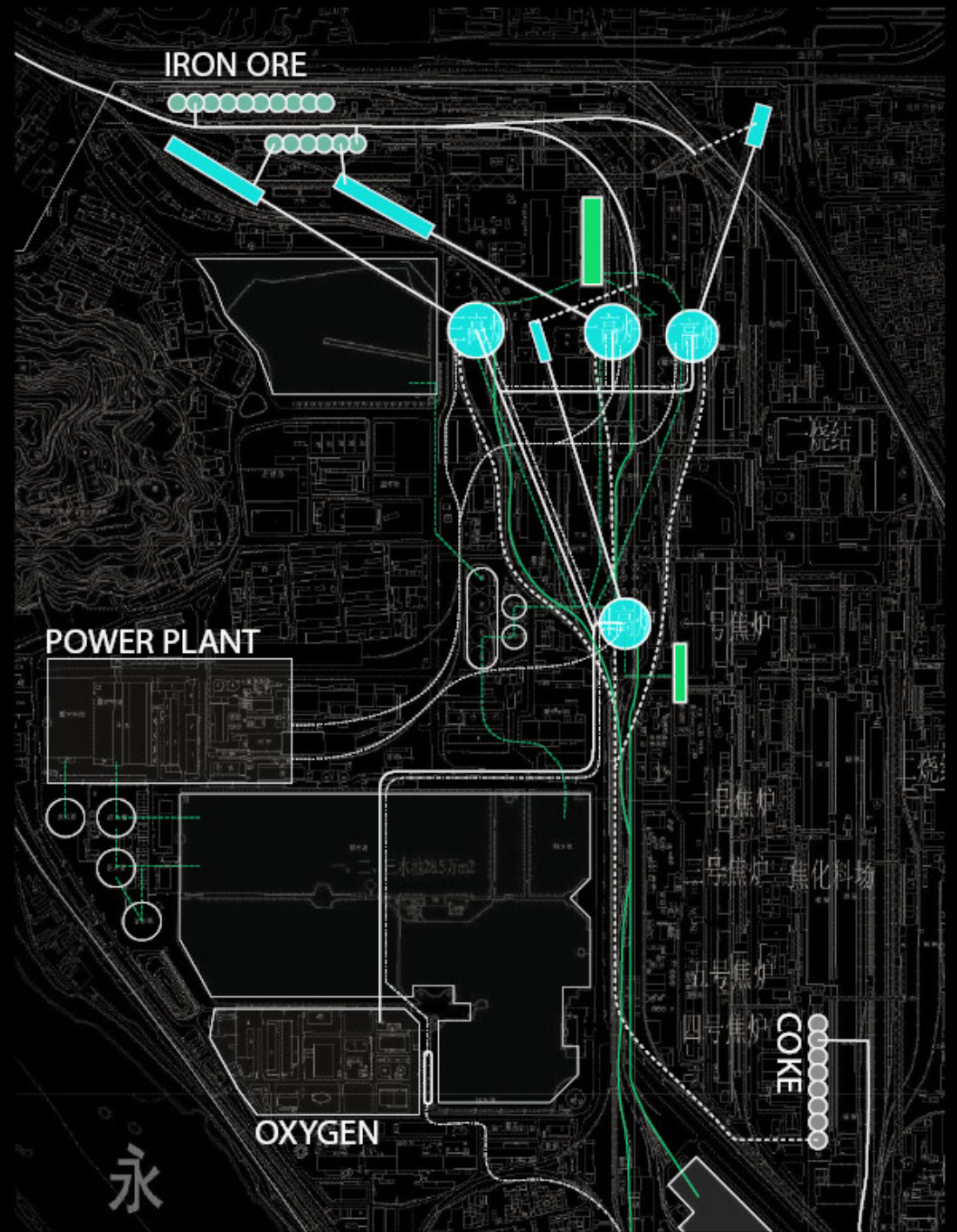
MIT - TSINGHUA | BEIJING URBAN DESIGN STUDIO

eskinazi victor | kaminski-coughlin ian | ming ye | pandit ninad

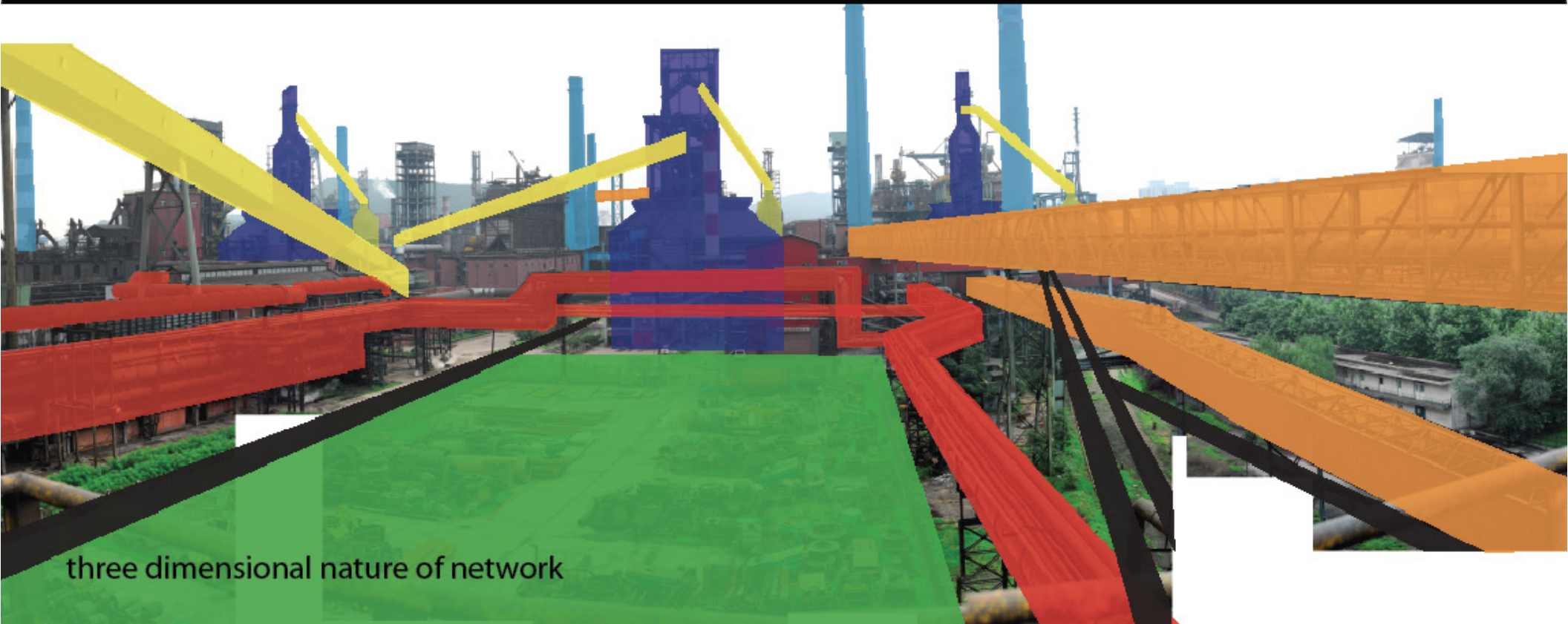
1. NETWORK



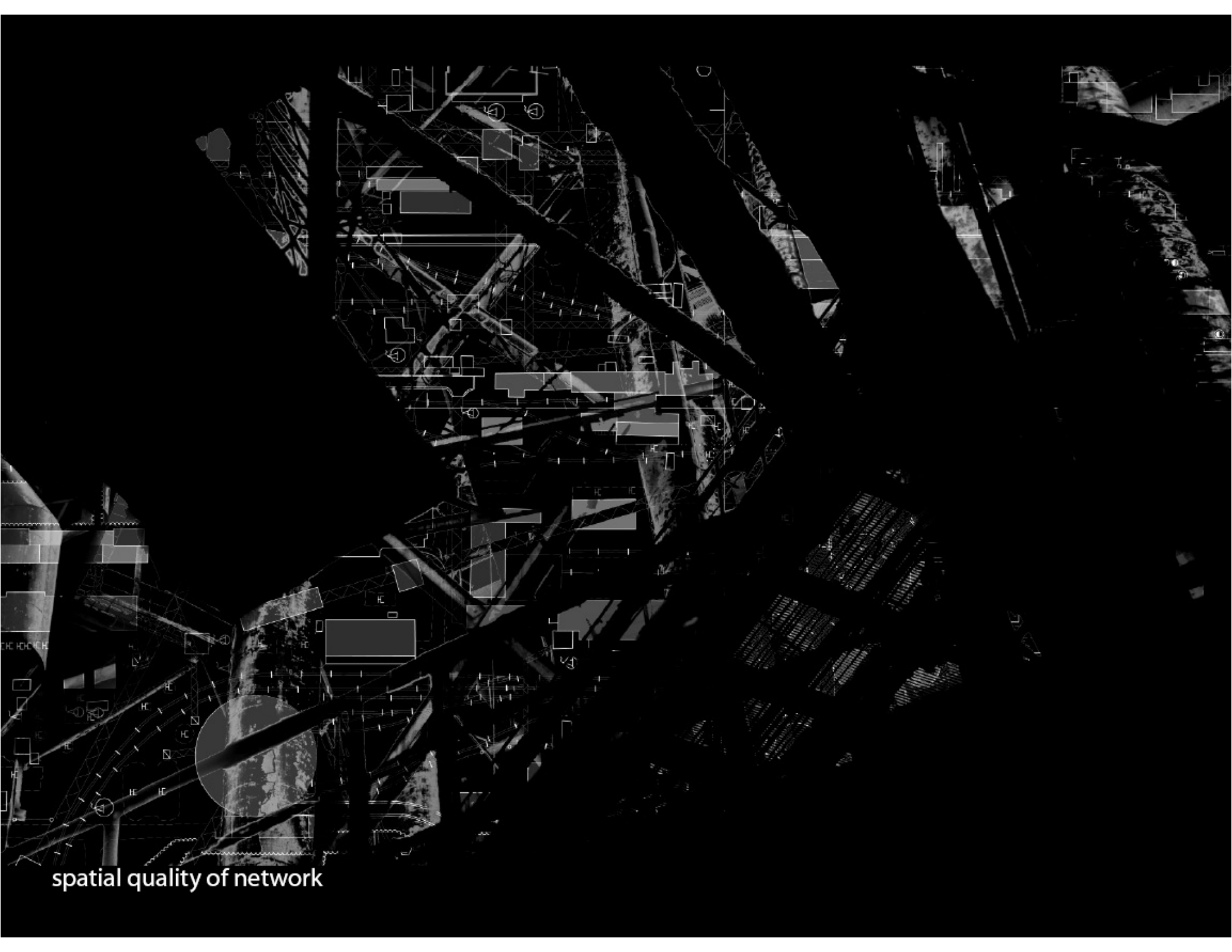
network and flows: the network distributes the process over the site



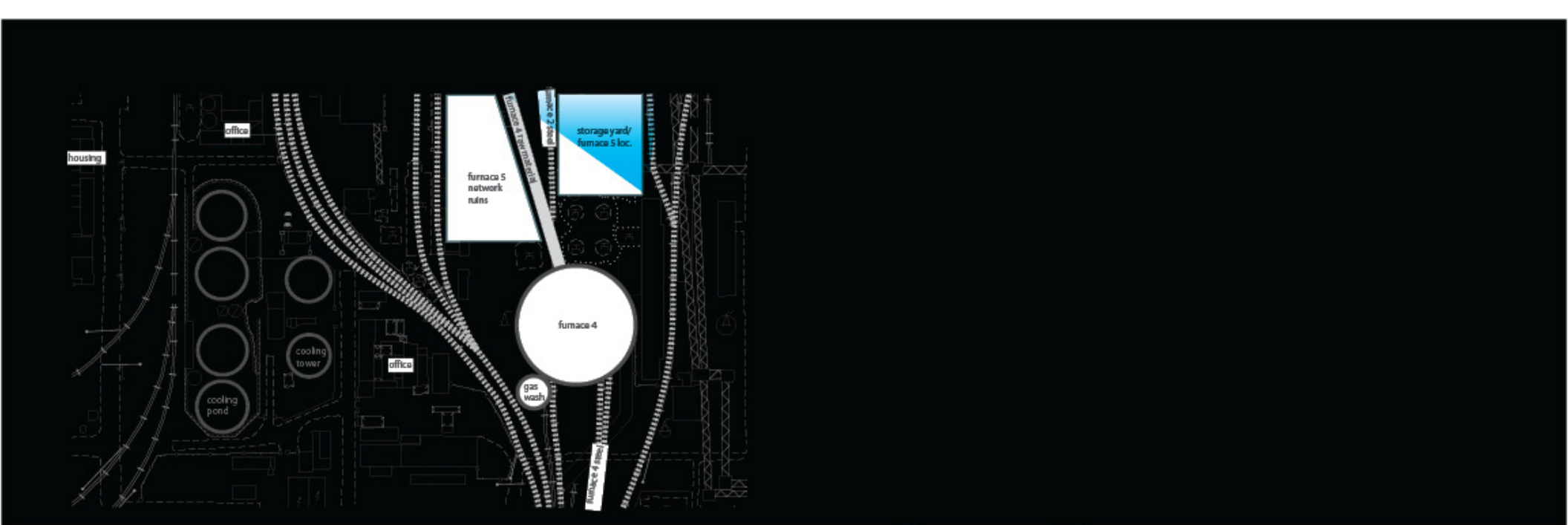
network at furnace



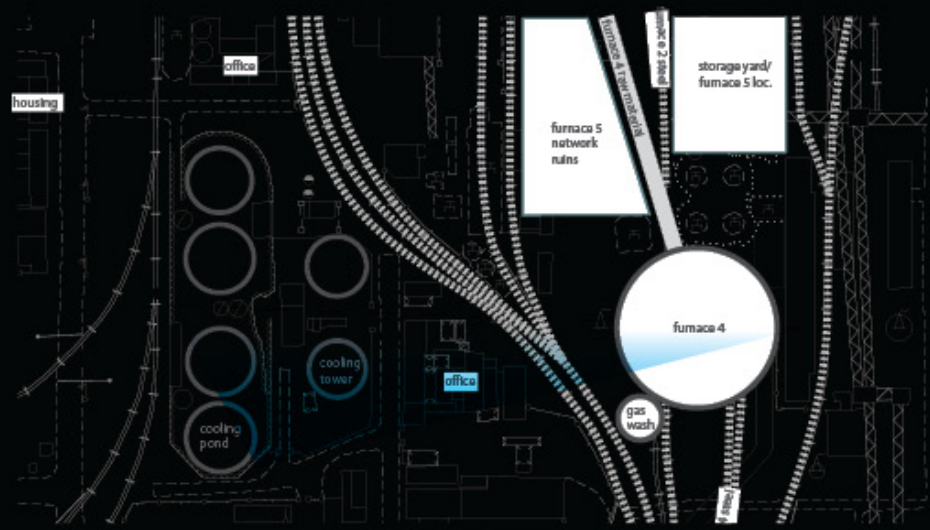
three dimensional nature of network



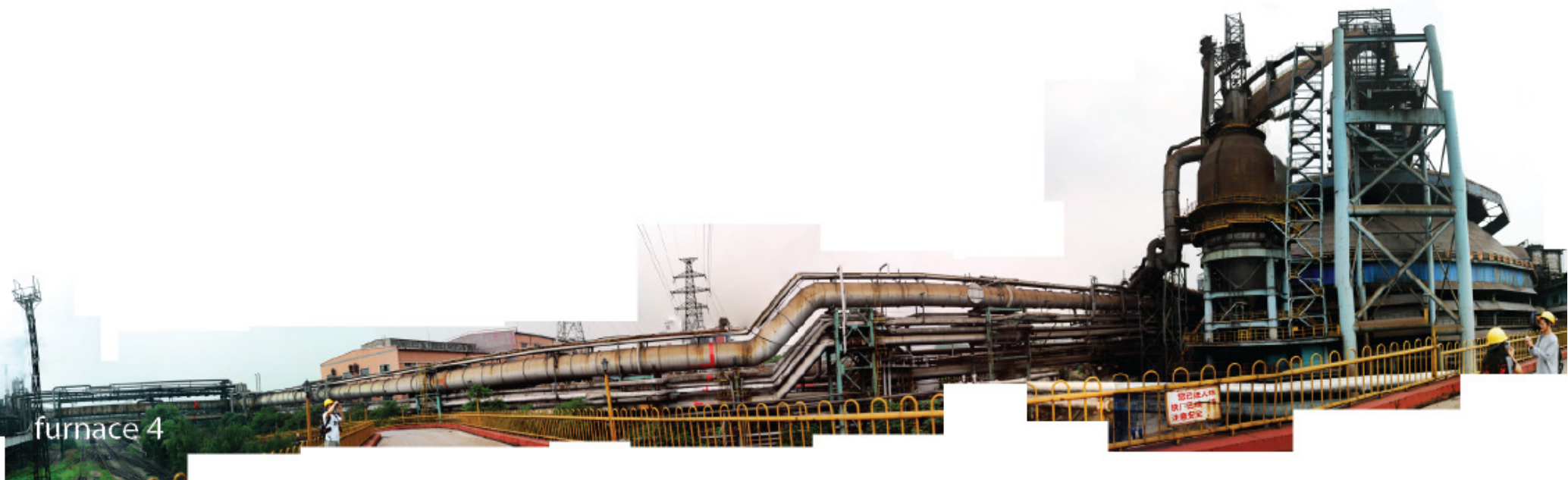
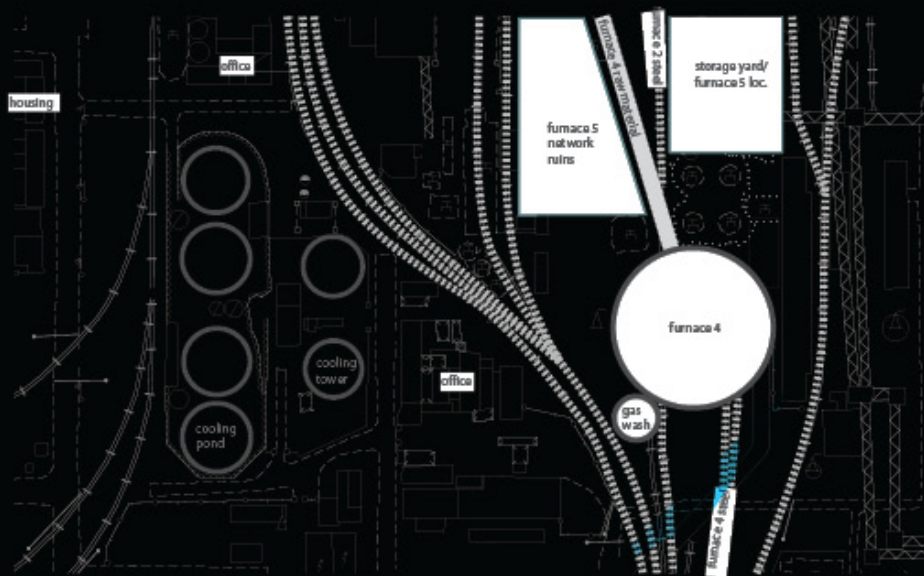
spatial quality of network

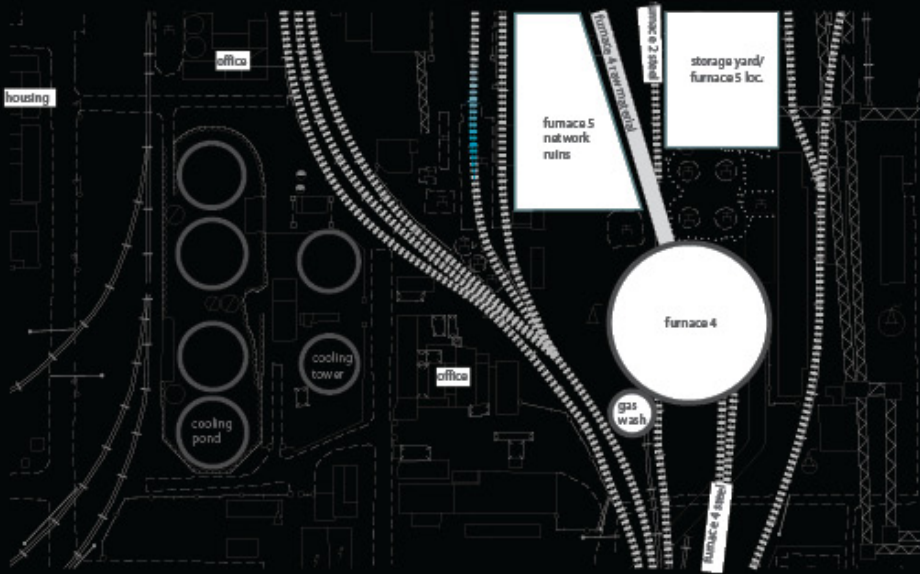


storage area/furnace 5



cooling pond & tower



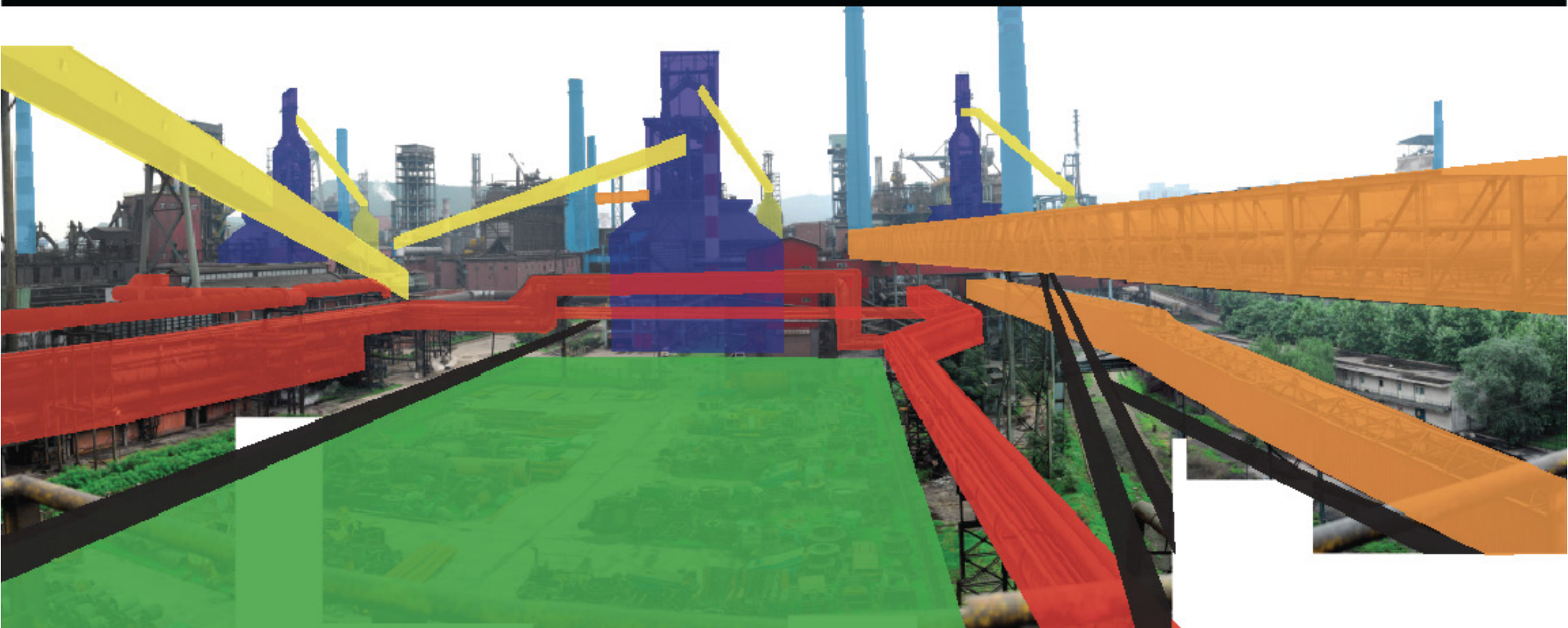


understory



sight lines / dynamic edges

2. PRESERVATION OF NETWORK / NETWORK AS MONUMENT



NETWORK IS STRUCTURE AND OBJECT

attitudes to monument



everyone is safe and every family is happy

attitudes to monument: sense of collective

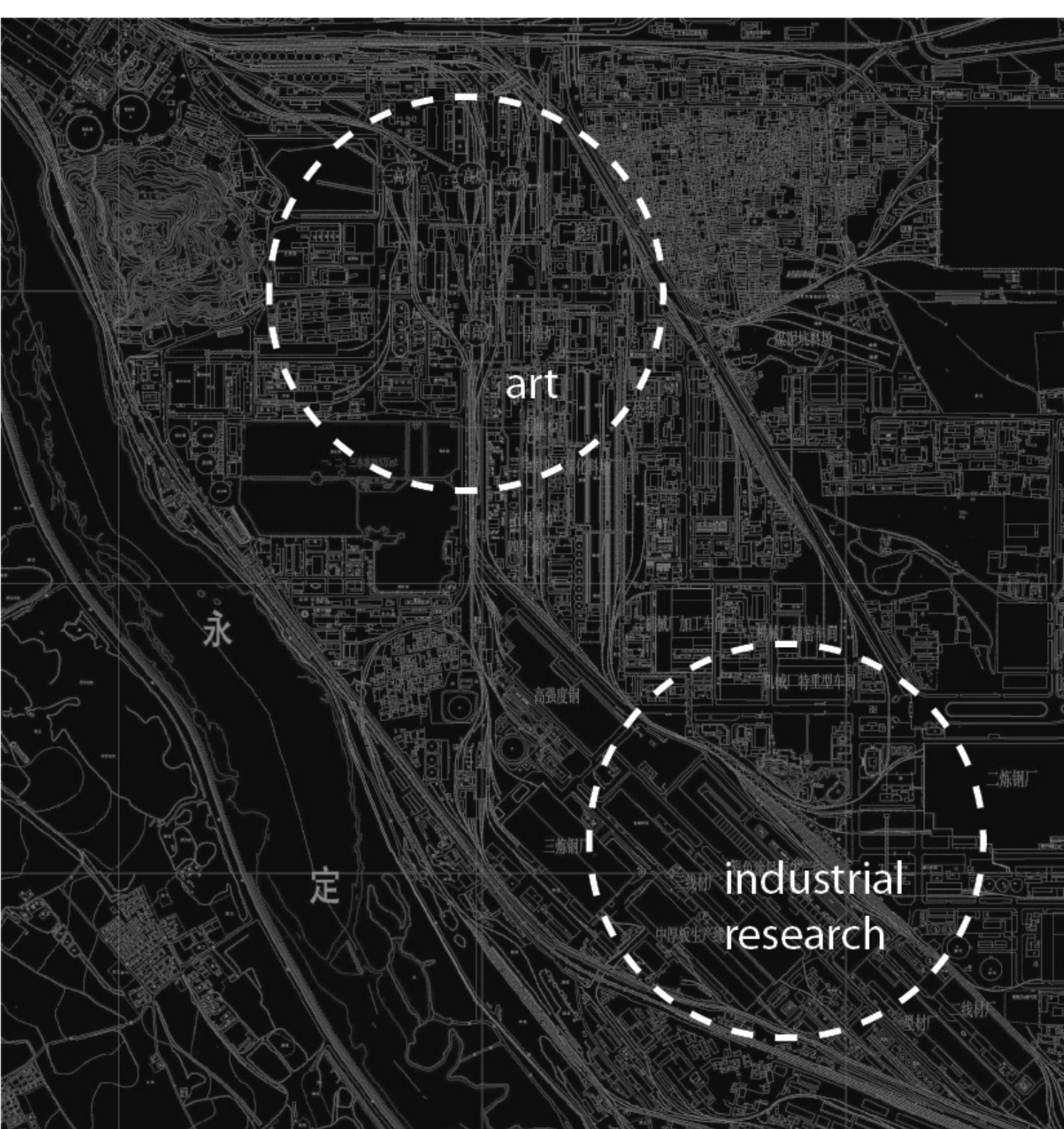


collective wisdom creates brilliant achievements



go to work happy, come home safe

attitudes to monument: celebration of work and creativity



program:

-commemorating the history of Shogang and its contribution to China

-Shogang Factory remains a site of production

-the special nature of the site is maintained by a very public face that becomes the new focus of Beijing

-the rapidly growing Art market is harnessed to create the public face of the site

-the creation of an Art District in the northern part of the site

-the Art District is further fueled by the creation of a residential Art School

-continuing production and innovation through a very public function

-the southern part of the site is developed as a commercial area for industrial research

-tapping into the growing industrial research industry around west Beijing and connecting it to Tsinghua and Beijing Universities

Proposed program:

Art District
Artist Studio/Housing
Art School
Gallery spaces

Research

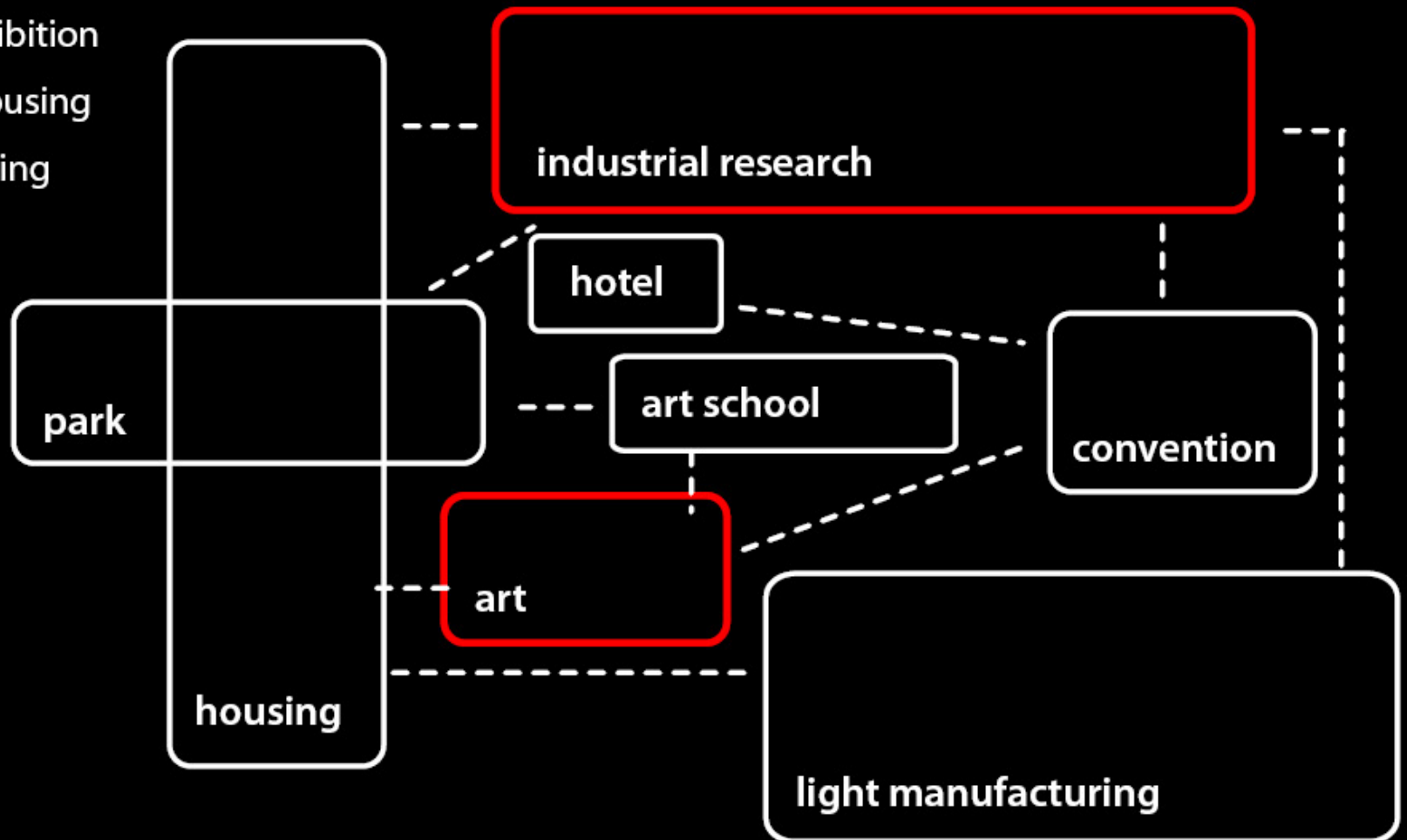
Convention / Exhibition

Mixed Income Housing

Light Manufacturing

Hotel

Park / Green



site planning

- network is retained
- preserving the "grain" of the site
- intersection of networks makes special spaces
- preserving buildings and industrial objects

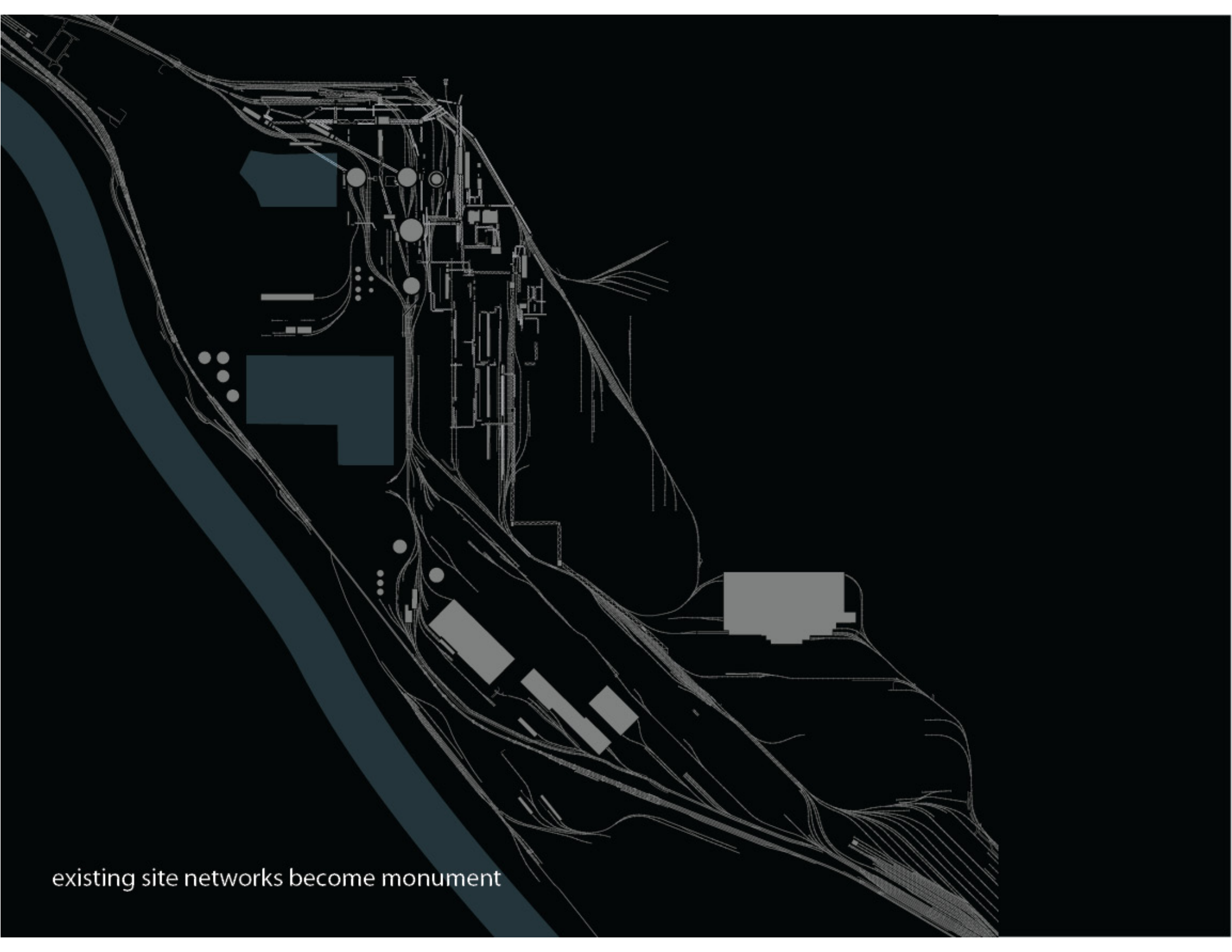
architectural design

- inserting infills between network/structure/object
- distorting infills for network

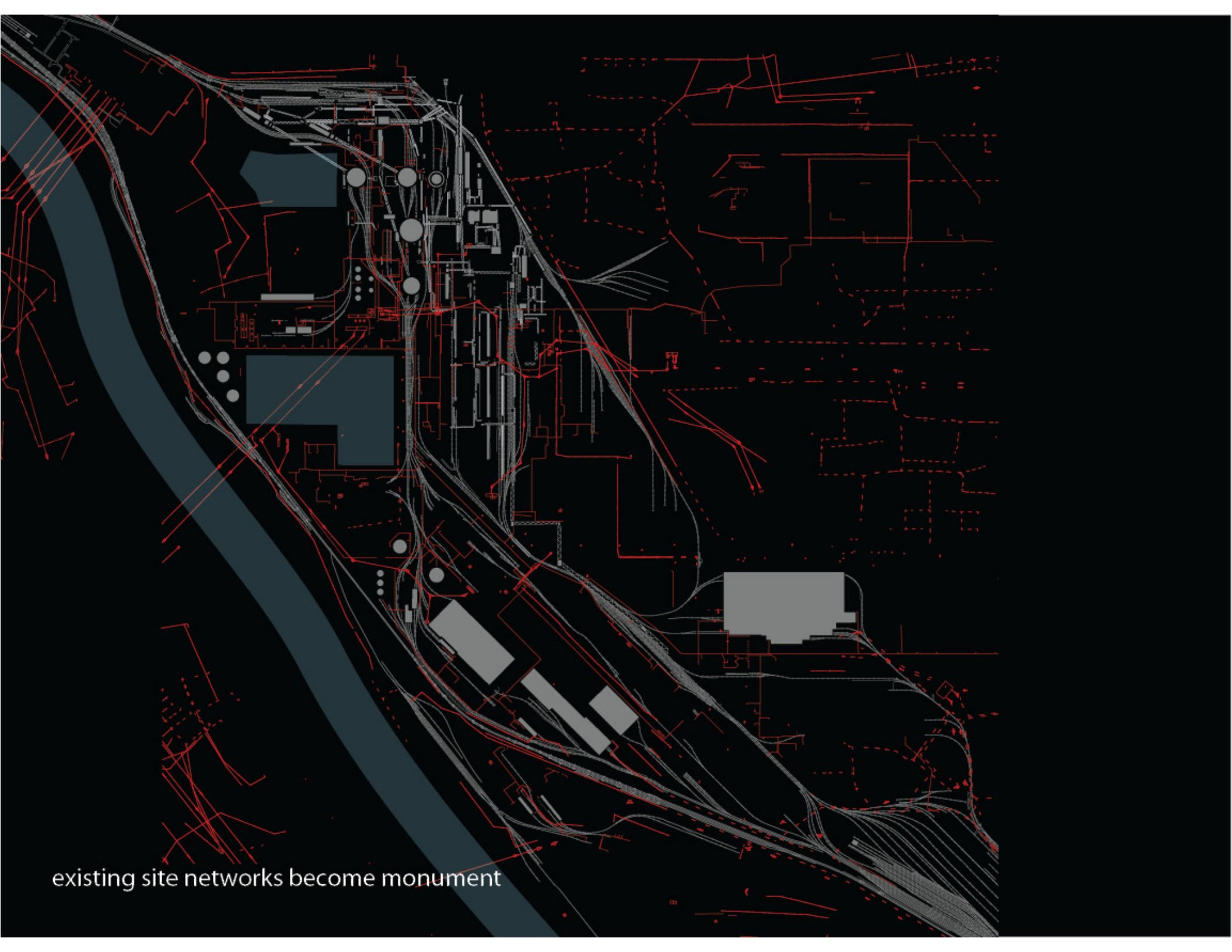
using the network/monument as a design tool



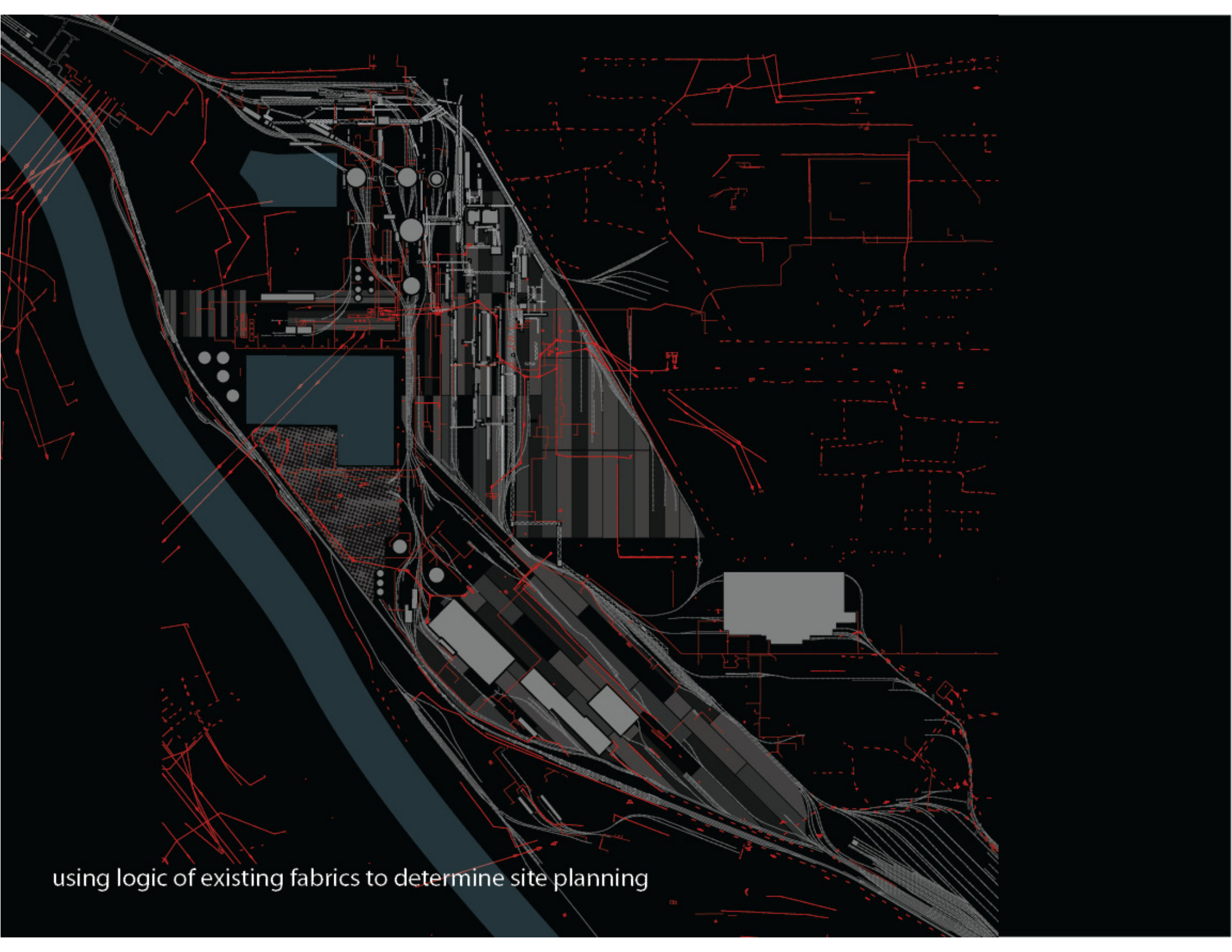
SITE PLANNING: existing site networks become monument



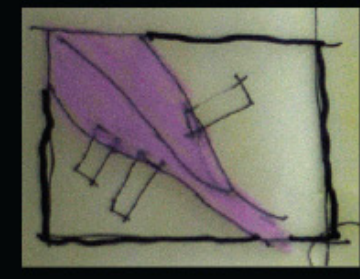
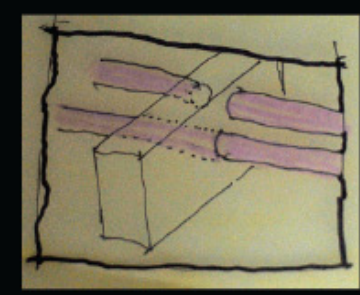
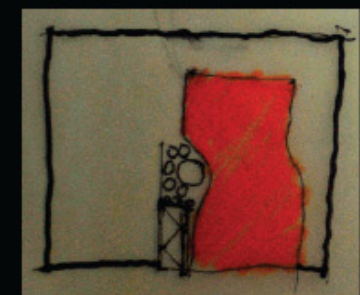
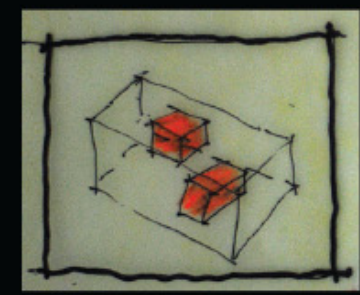
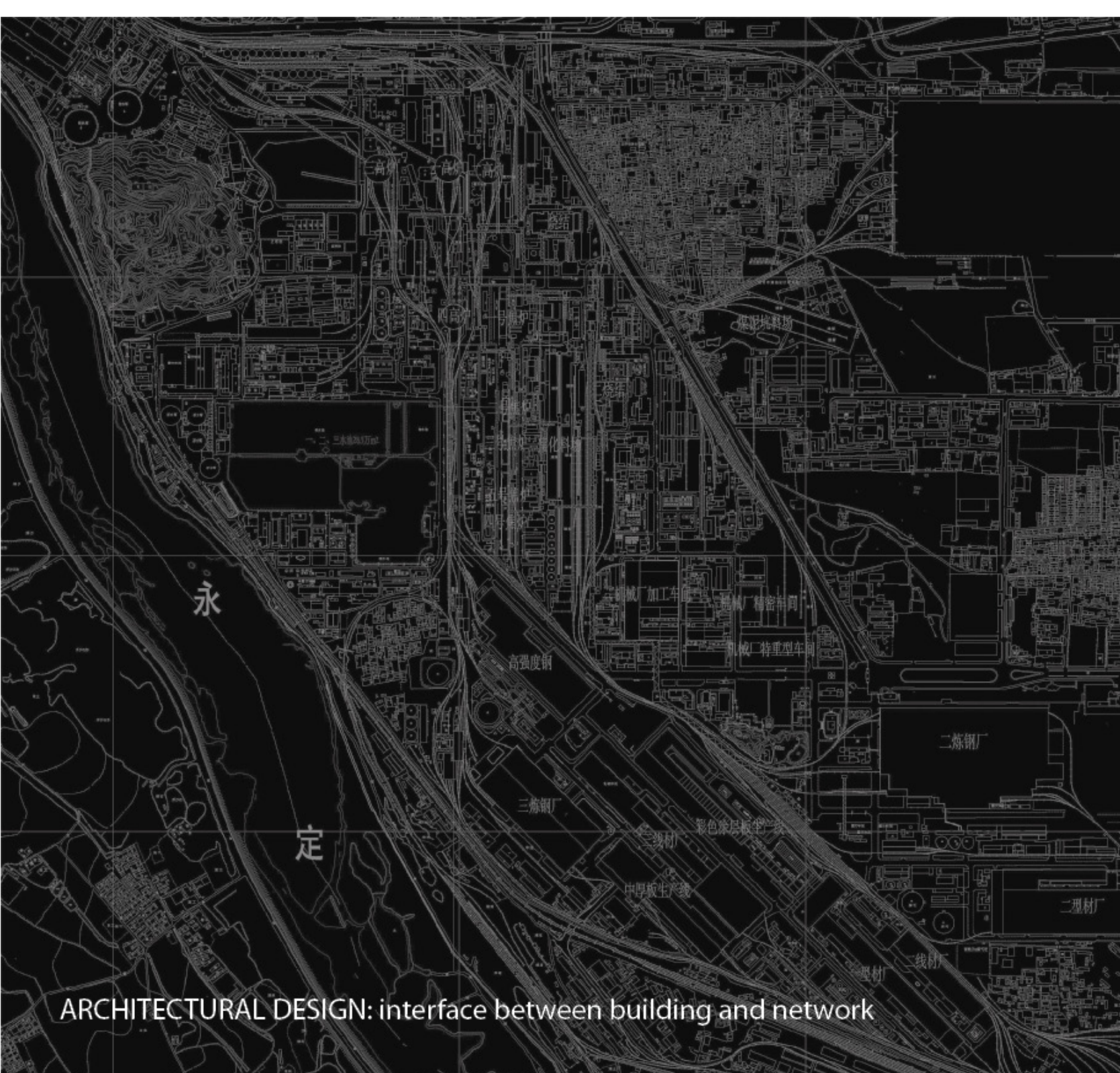
existing site networks become monument



existing site networks become monument

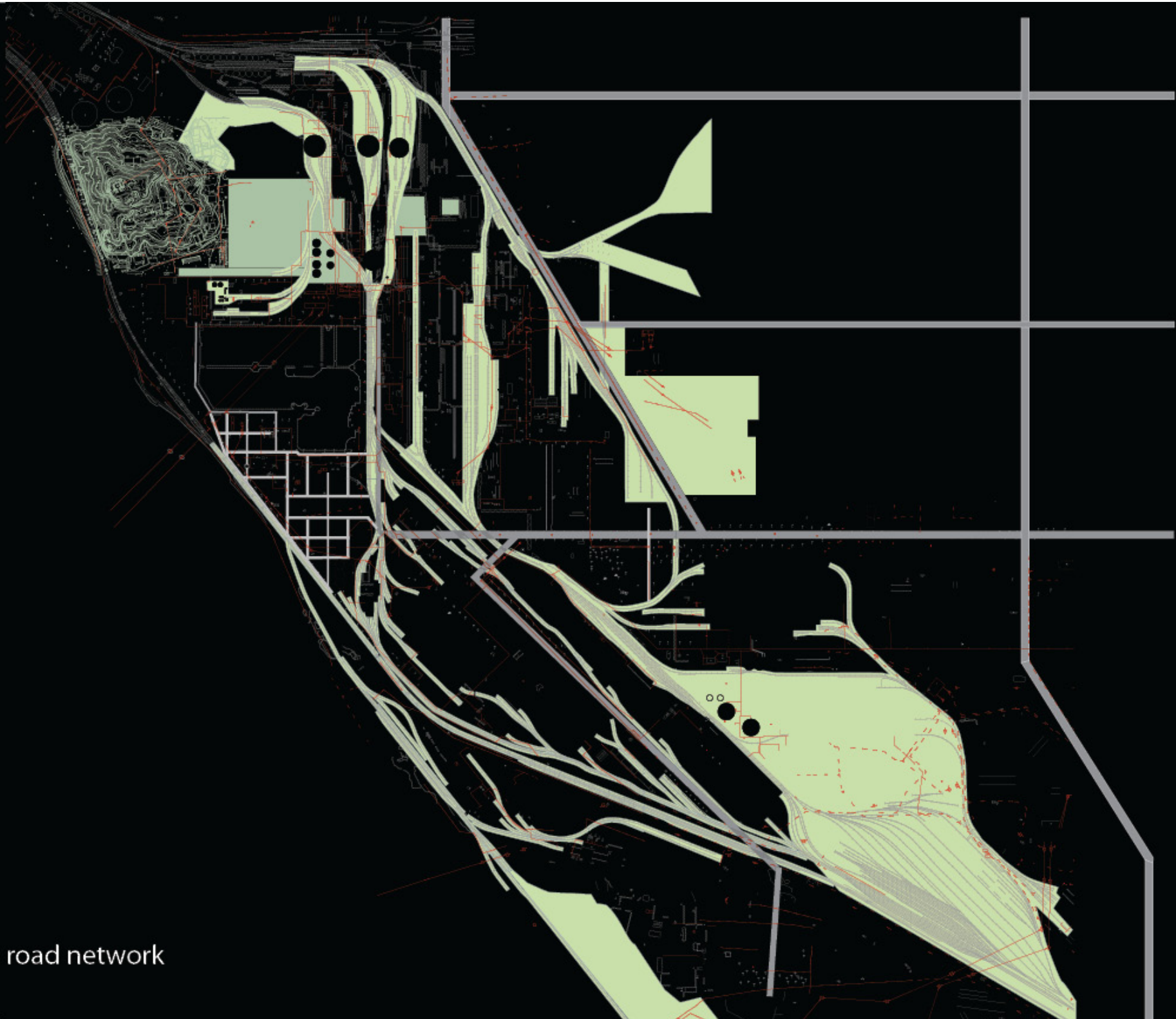


using logic of existing fabrics to determine site planning



ARCHITECTURAL DESIGN: interface between building and network

main road network



secondary road network





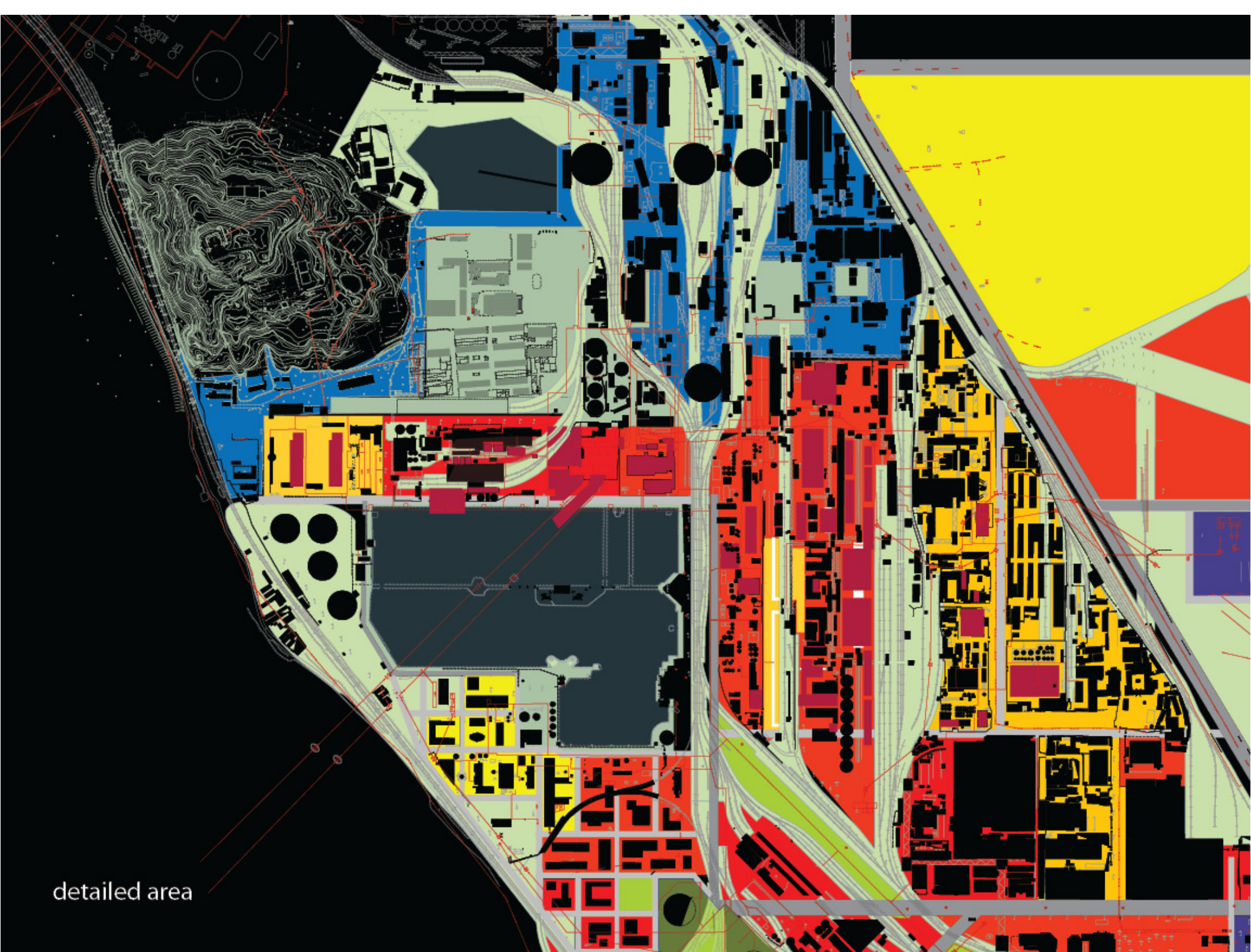
new subway connection and tram loops



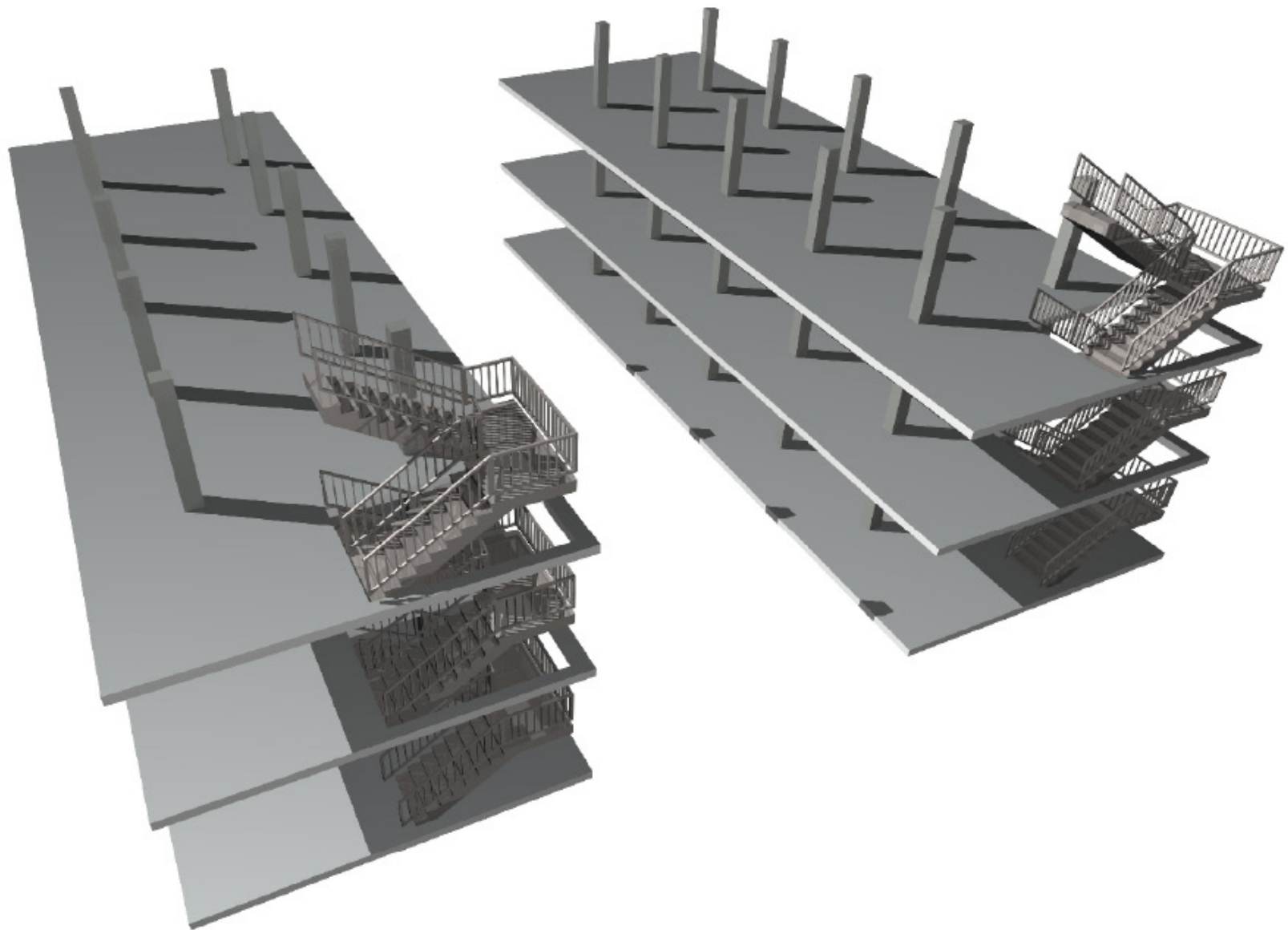
land use



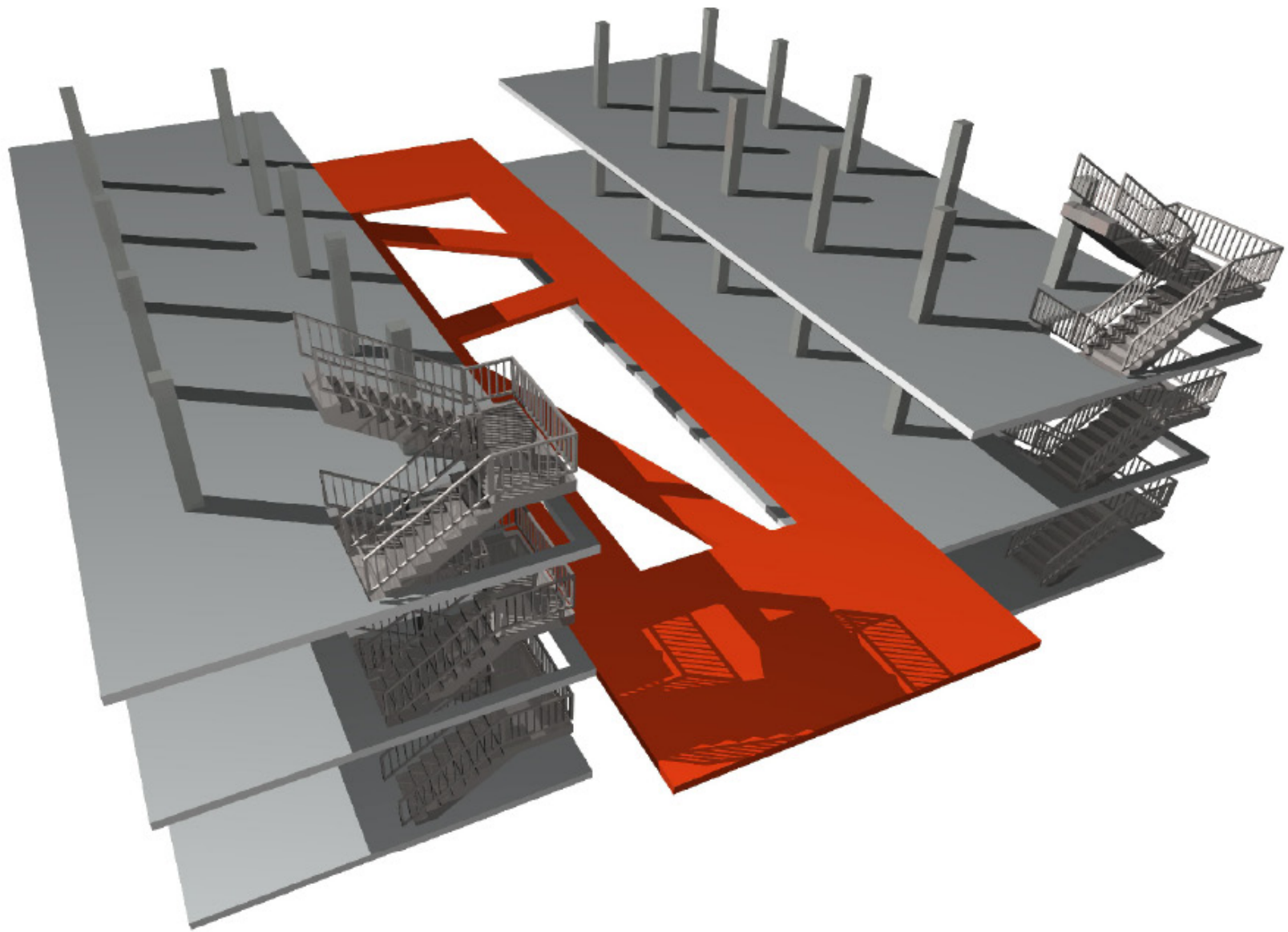
landuse with buildings



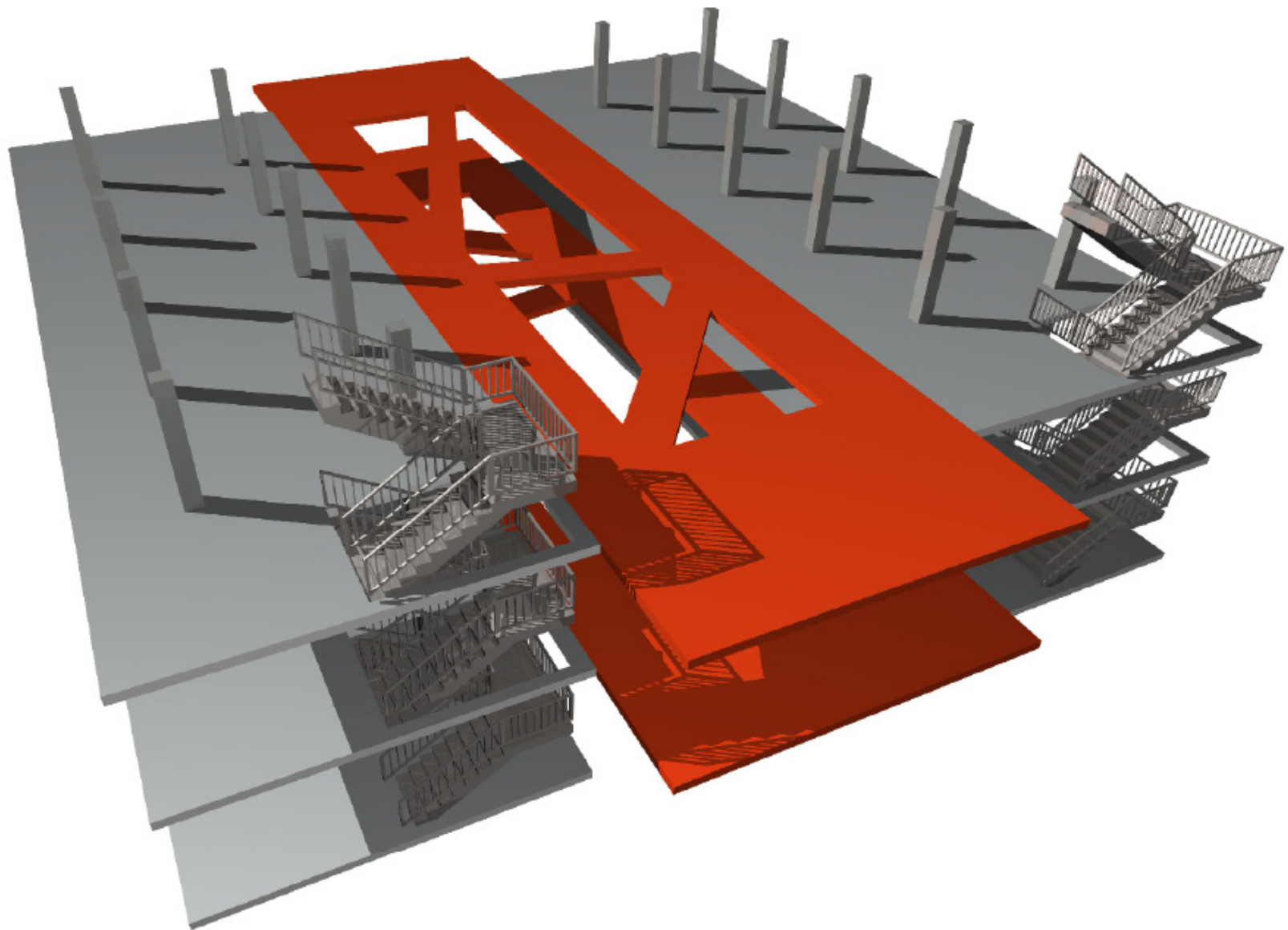
detailed area



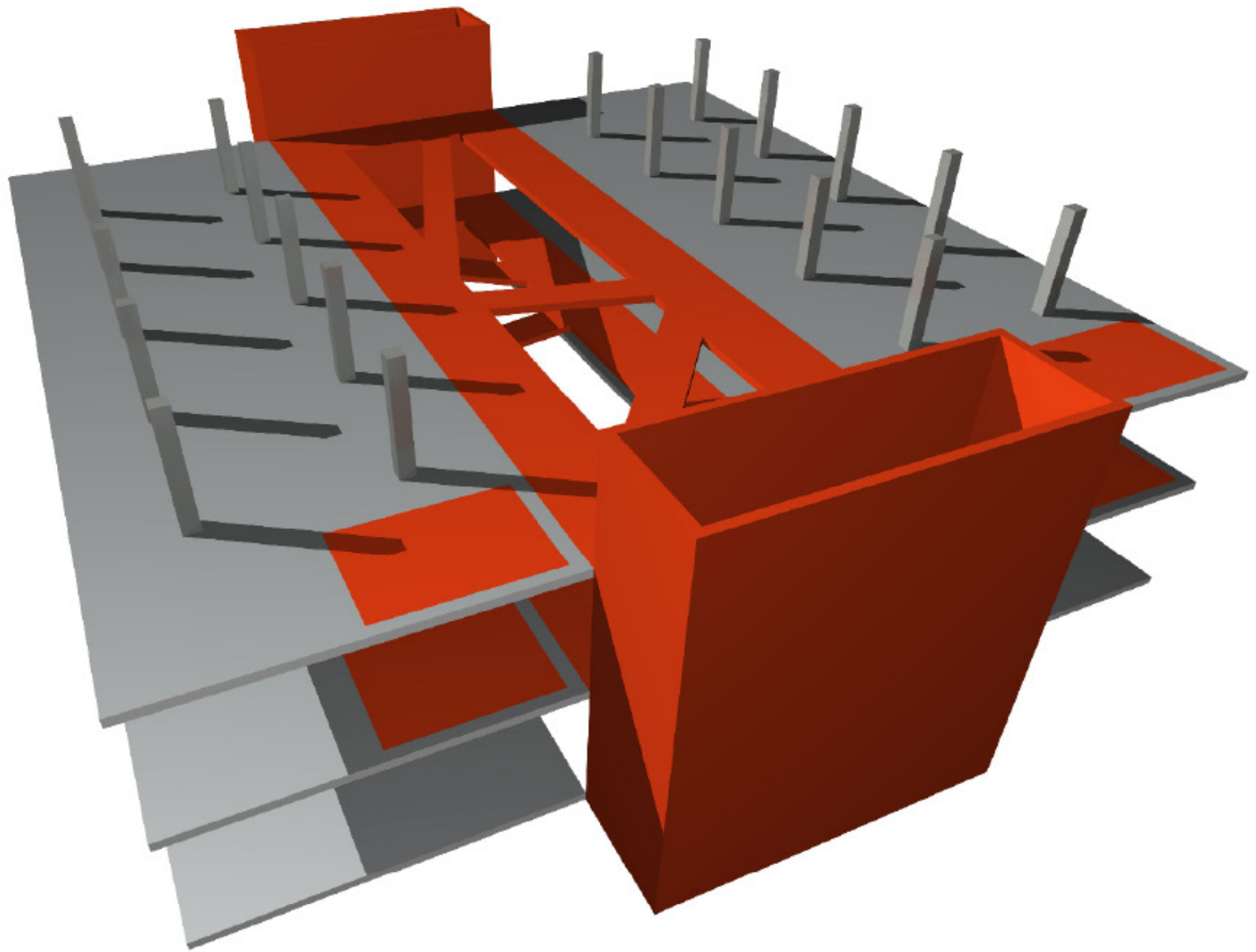
infill strategy diagram



infill strategy diagram



infill strategy diagram



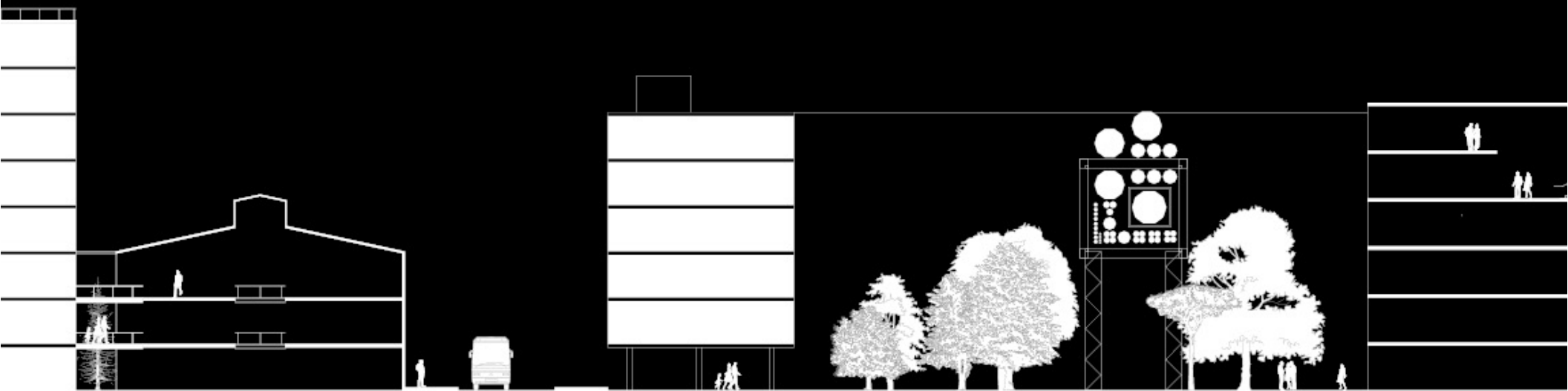
infill strategy diagram

furnace 4 area

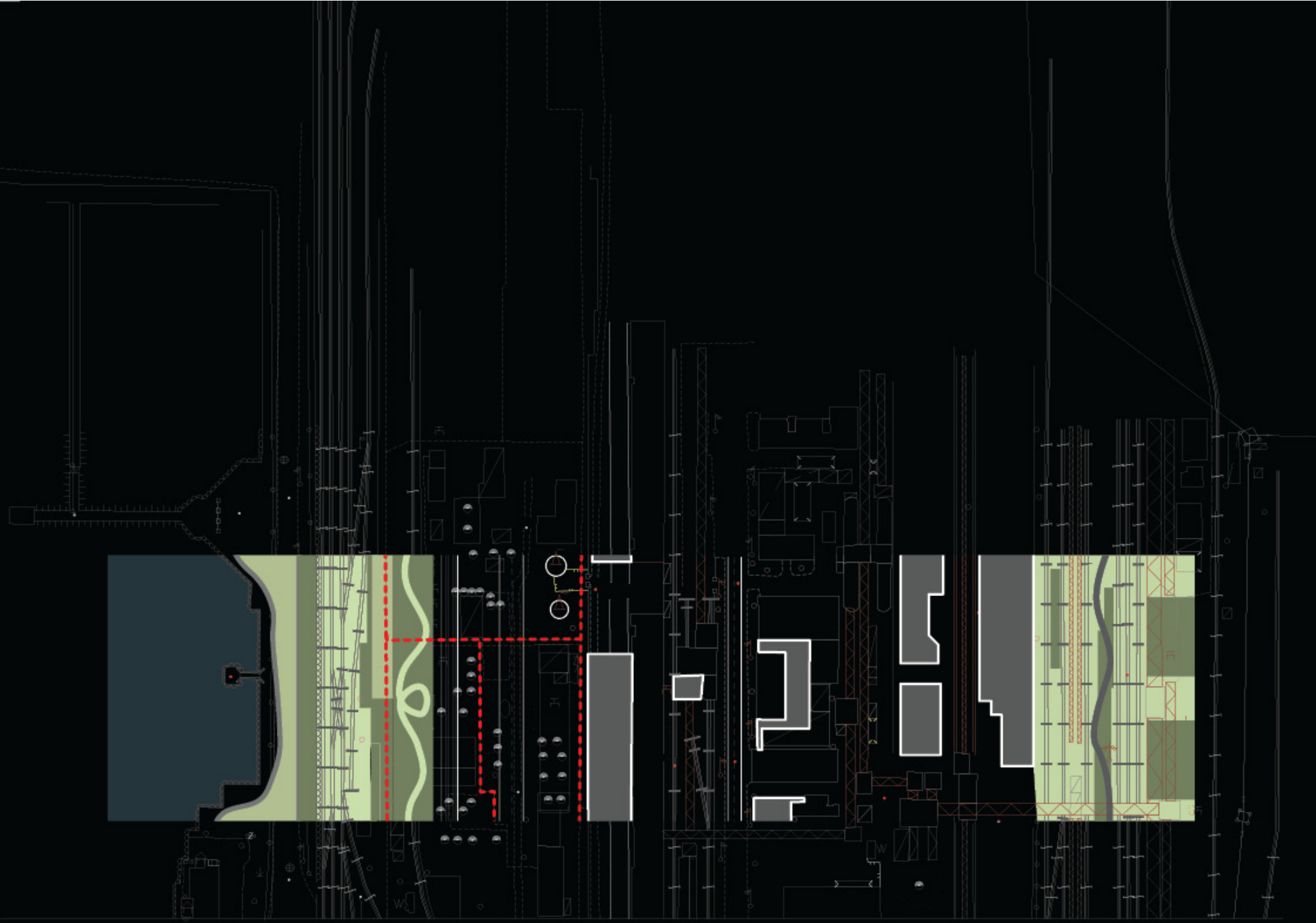




furnace 4 area detail



furnace 4 area detail



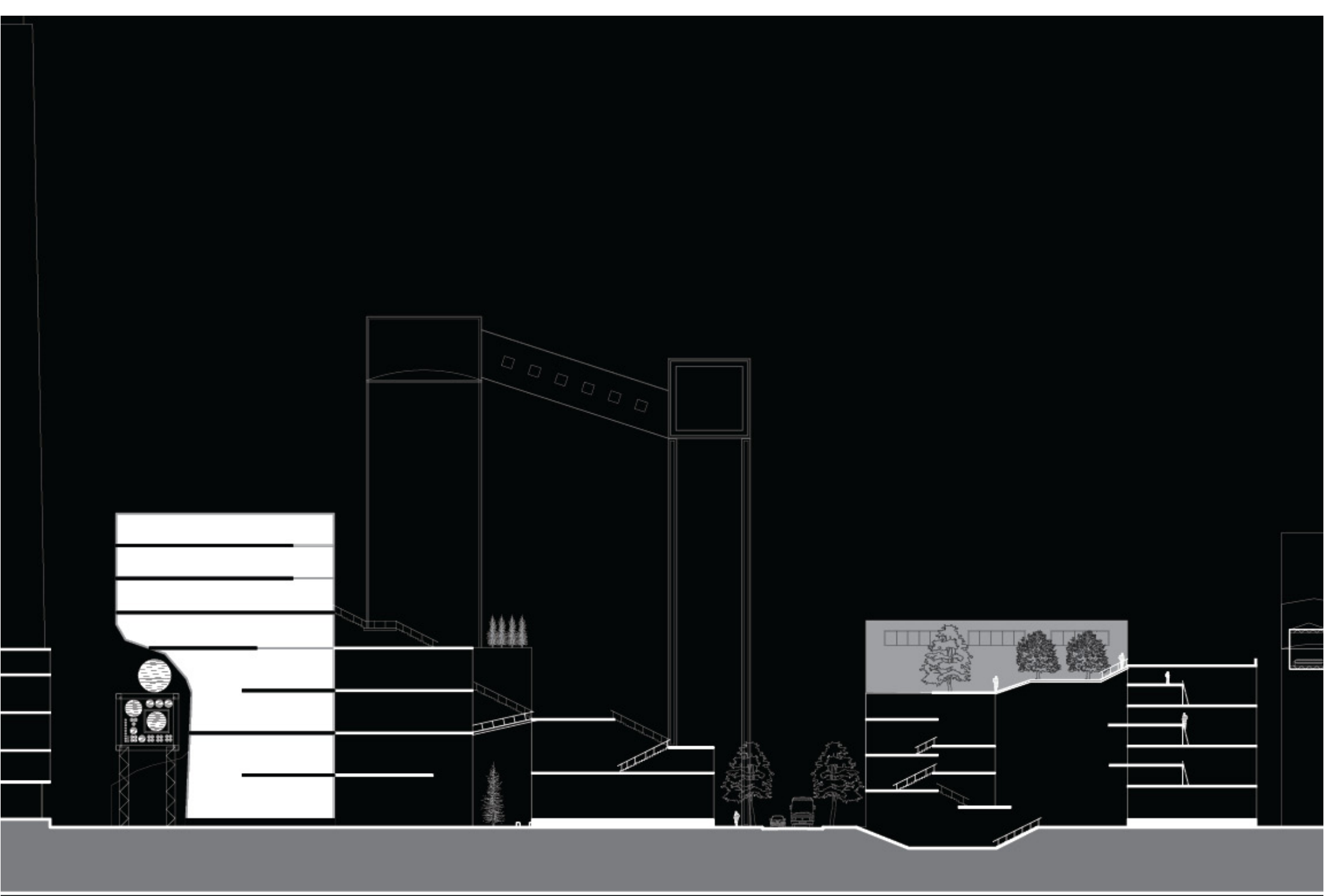
lake side area plan



lake side area section



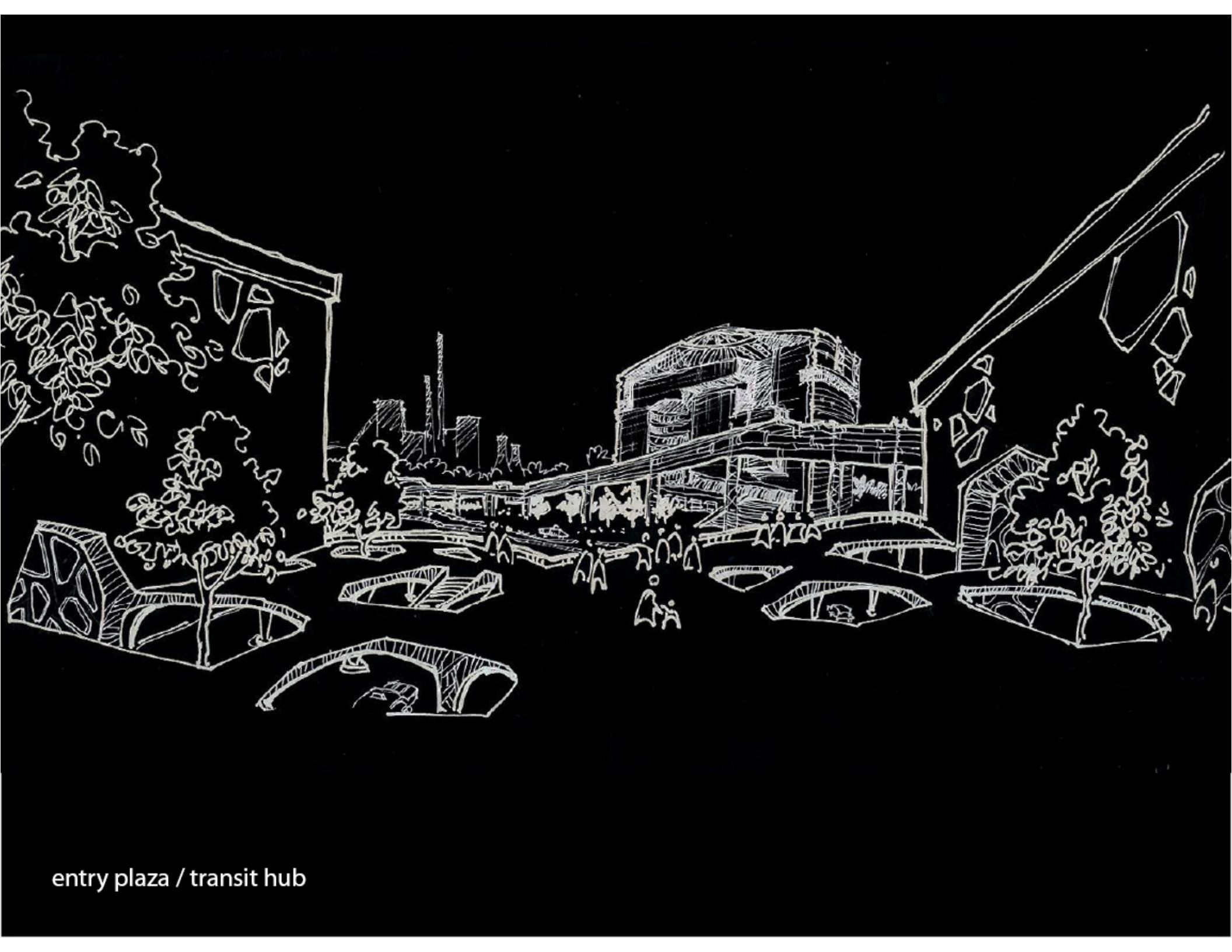
lake side area section detail



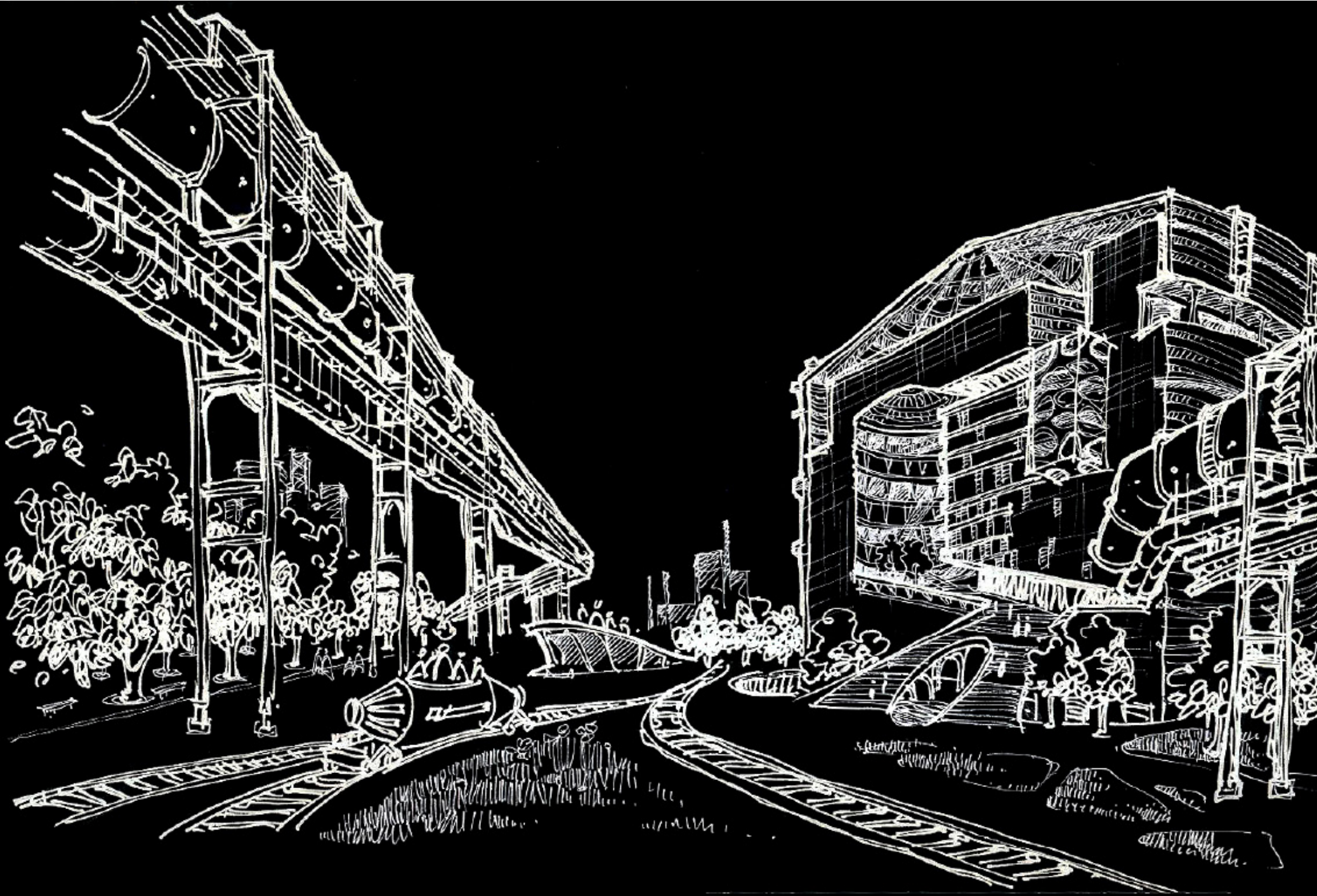
lake side area section detail



lake side area section detail



entry plaza / transit hub



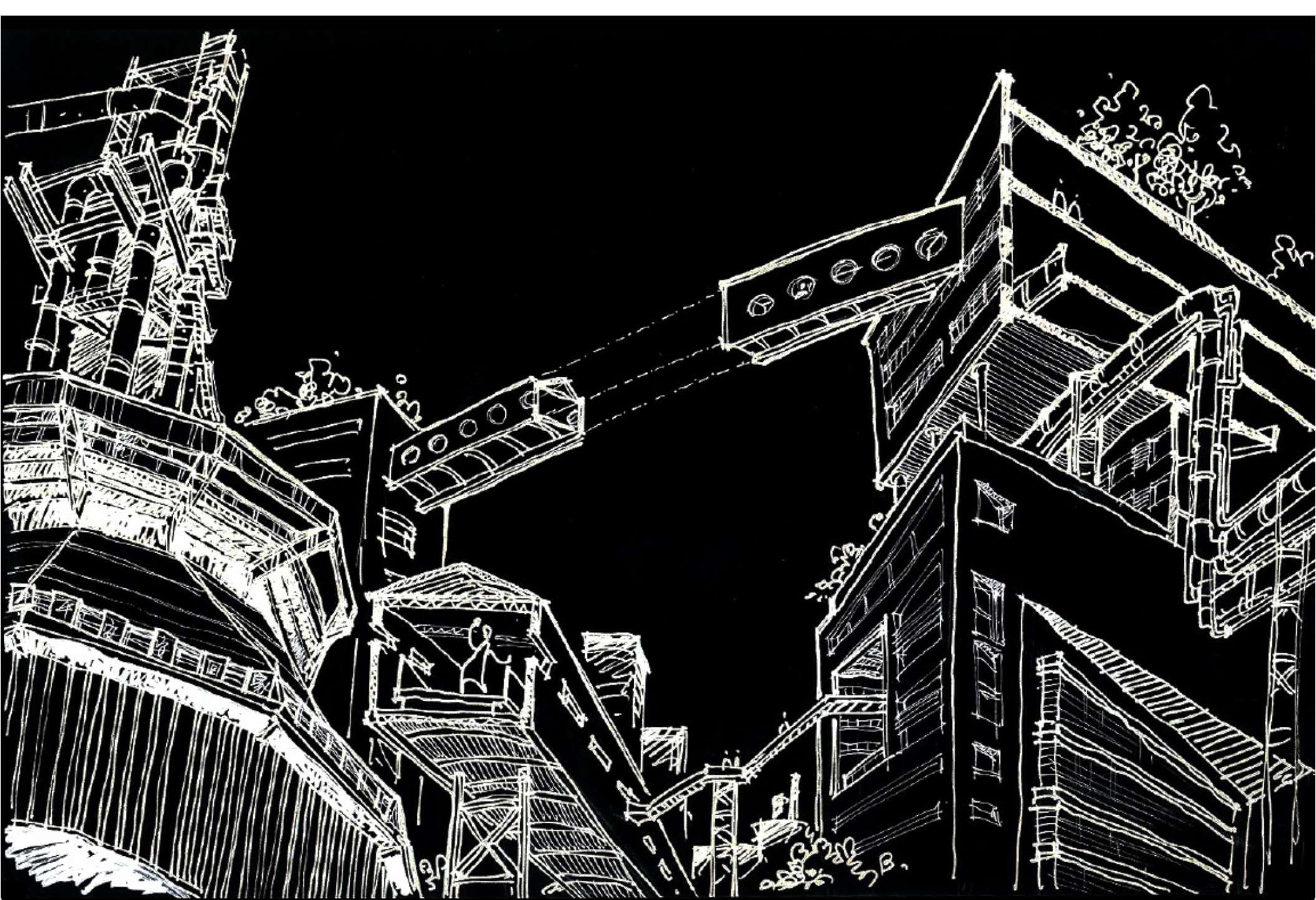
linear plaza park



waterfront / ferry terminal



central park



furnace 4 entertainment area