

MIT OpenCourseWare  
<http://ocw.mit.edu>

11.307 Beijing Urban Design Studio  
Summer 2008

For information about citing these materials or our Terms of Use, visit: <http://ocw.mit.edu/terms>.





## Green System



# Green System

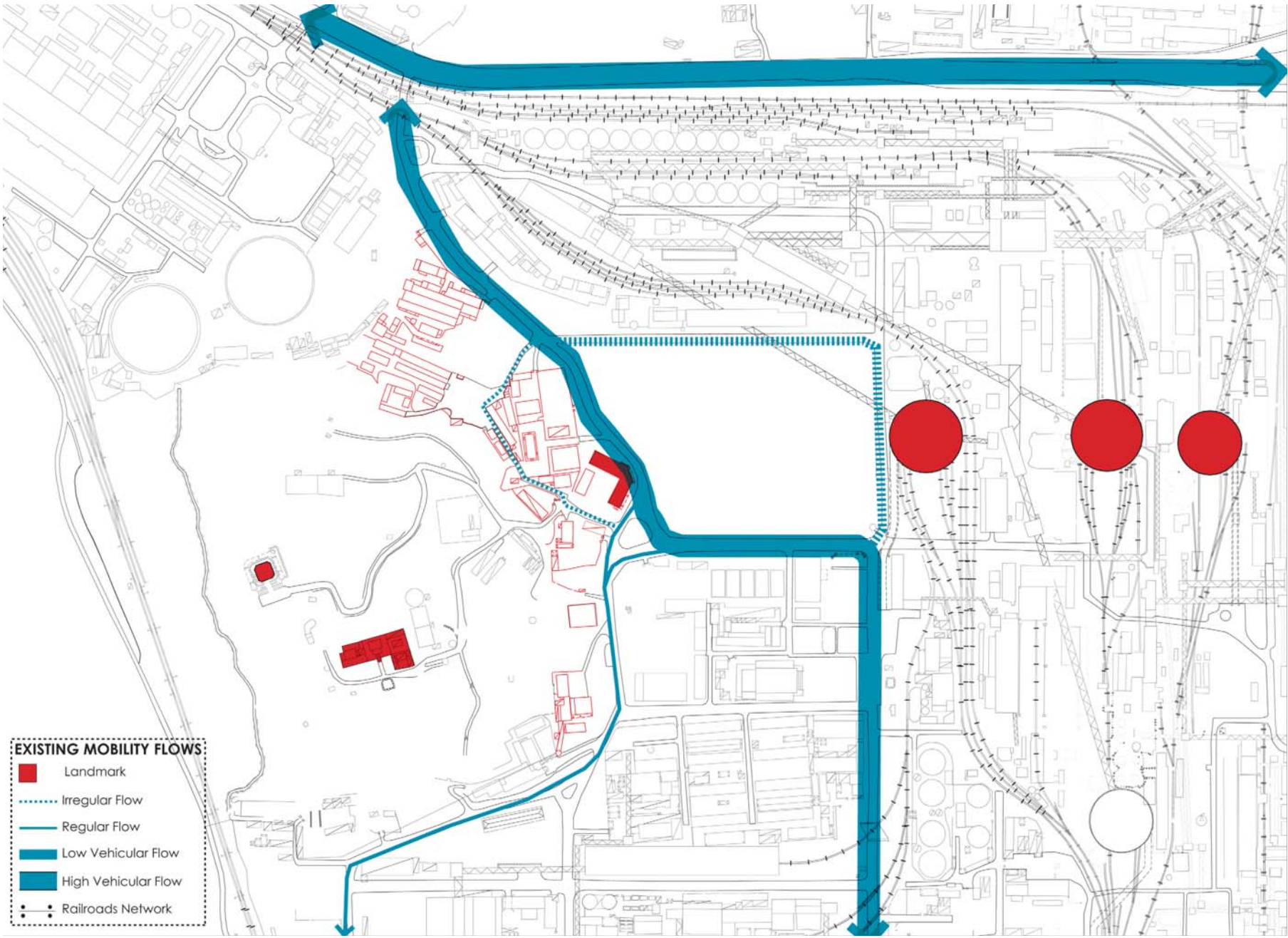
# Transportation System



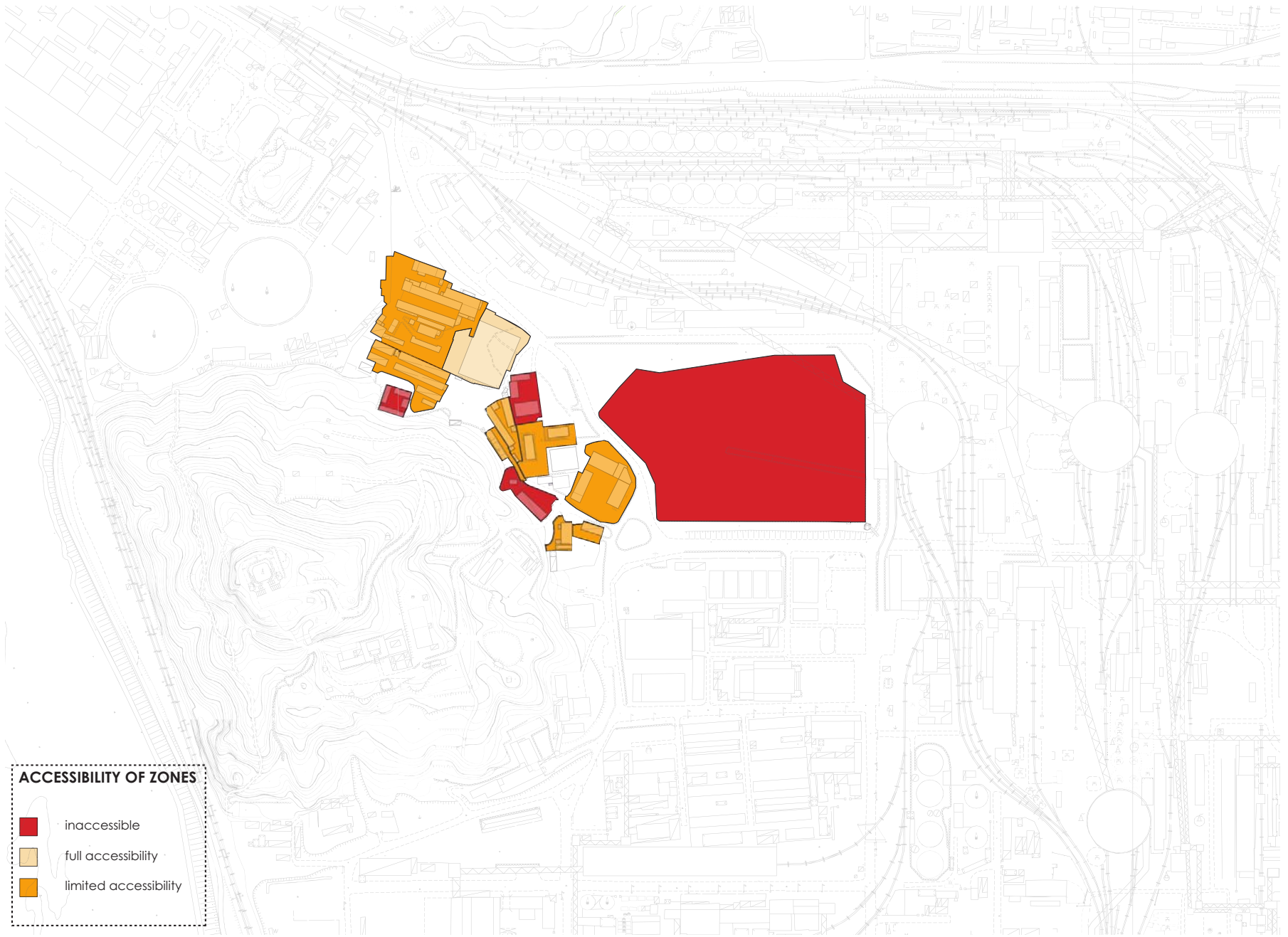
**EXISTING INFRASTRUCTURE NETWORKS**

- Landmark
- Pedestrian Network
- Vehicular Network
- Railroads Network

Mobility Flow

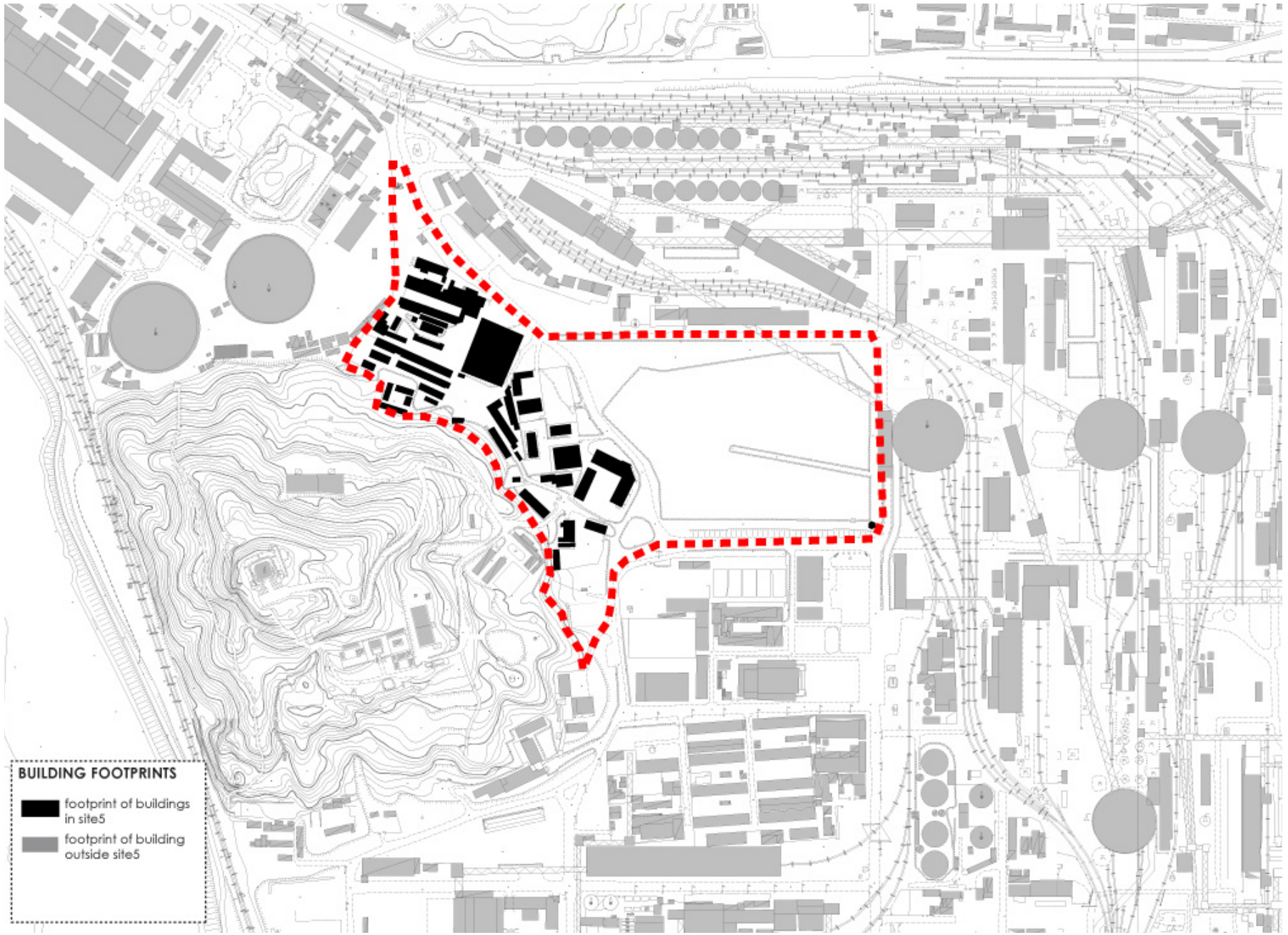


# Accessibility

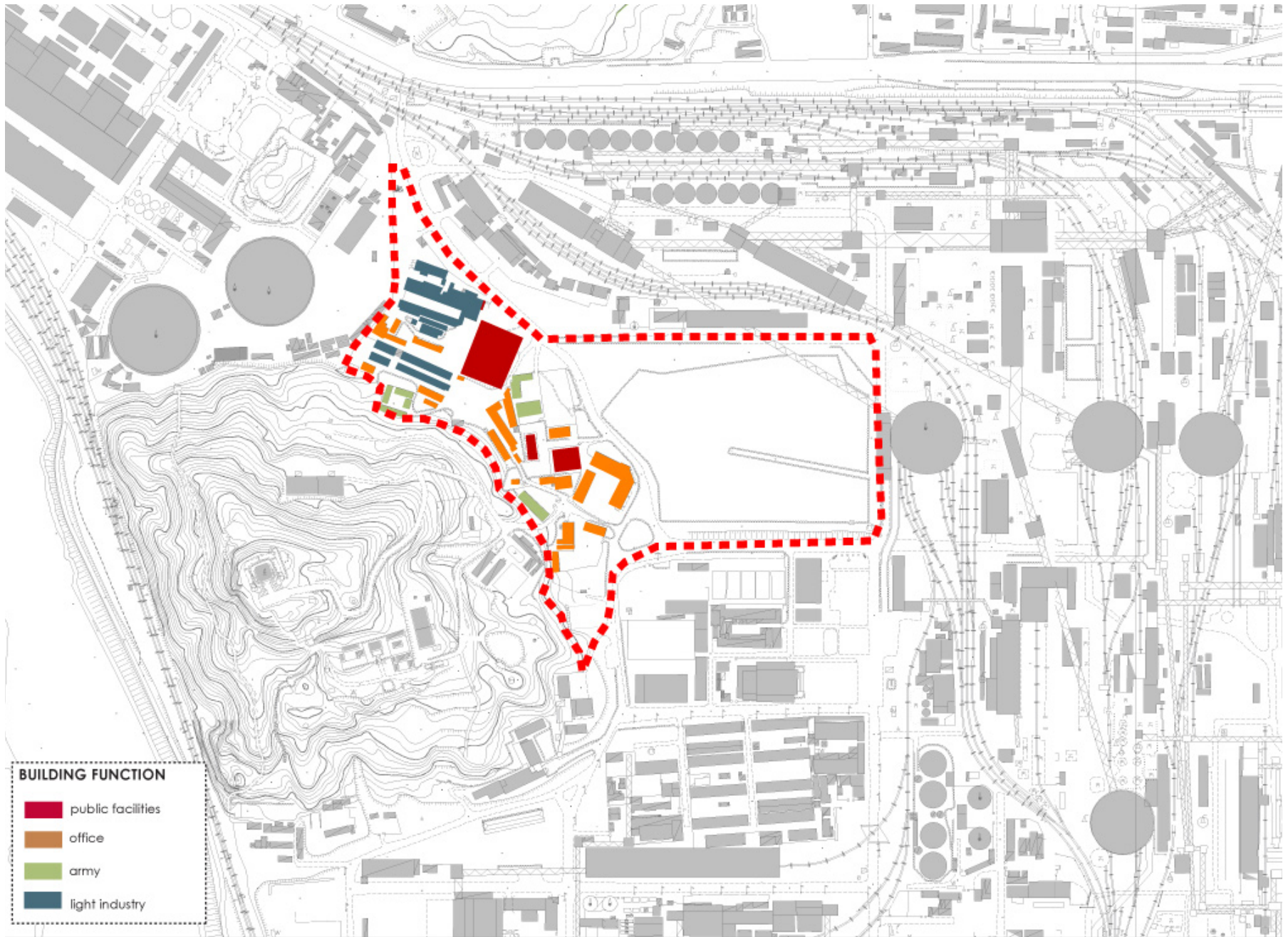


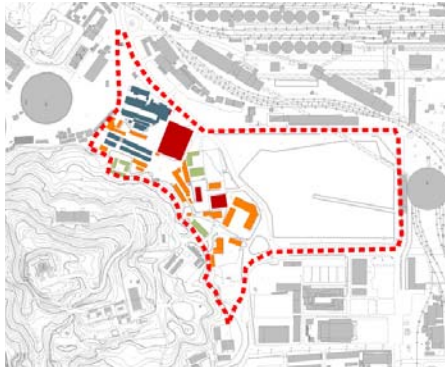
## **4 Urban Conditions: Existing Buildings**



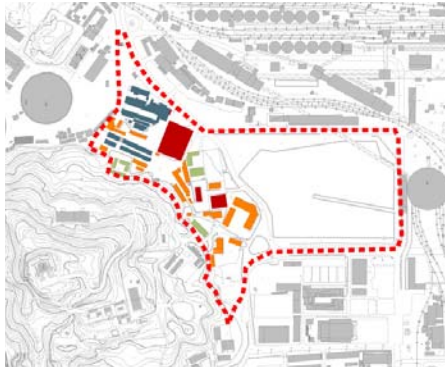


# Function

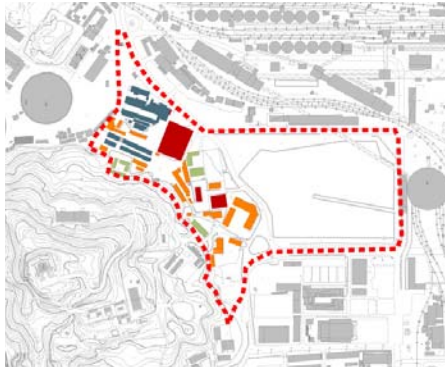




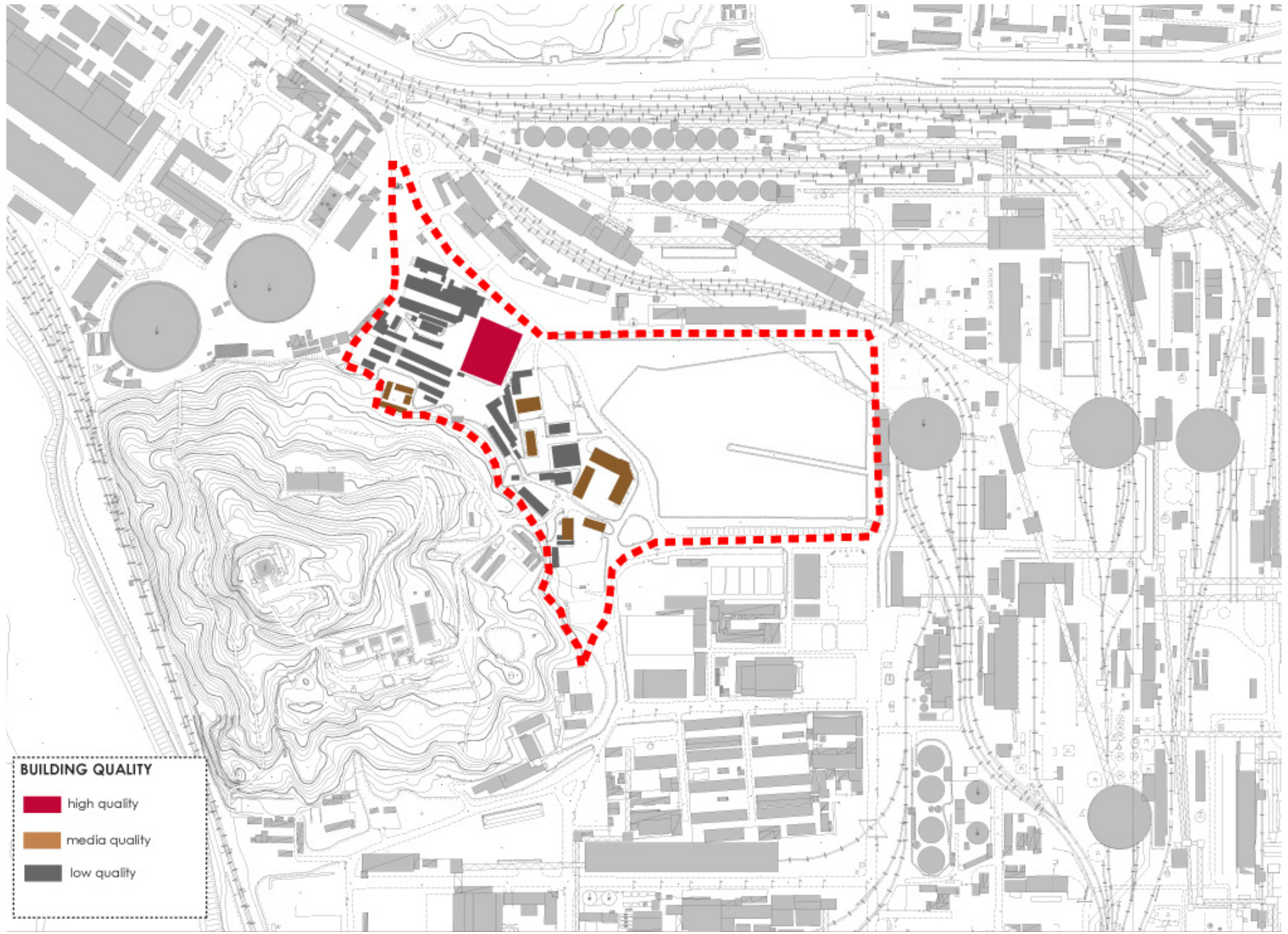
Function



Function



Function



## **5 Resolutions**

## 1. Retain Significant Industrial Monuments



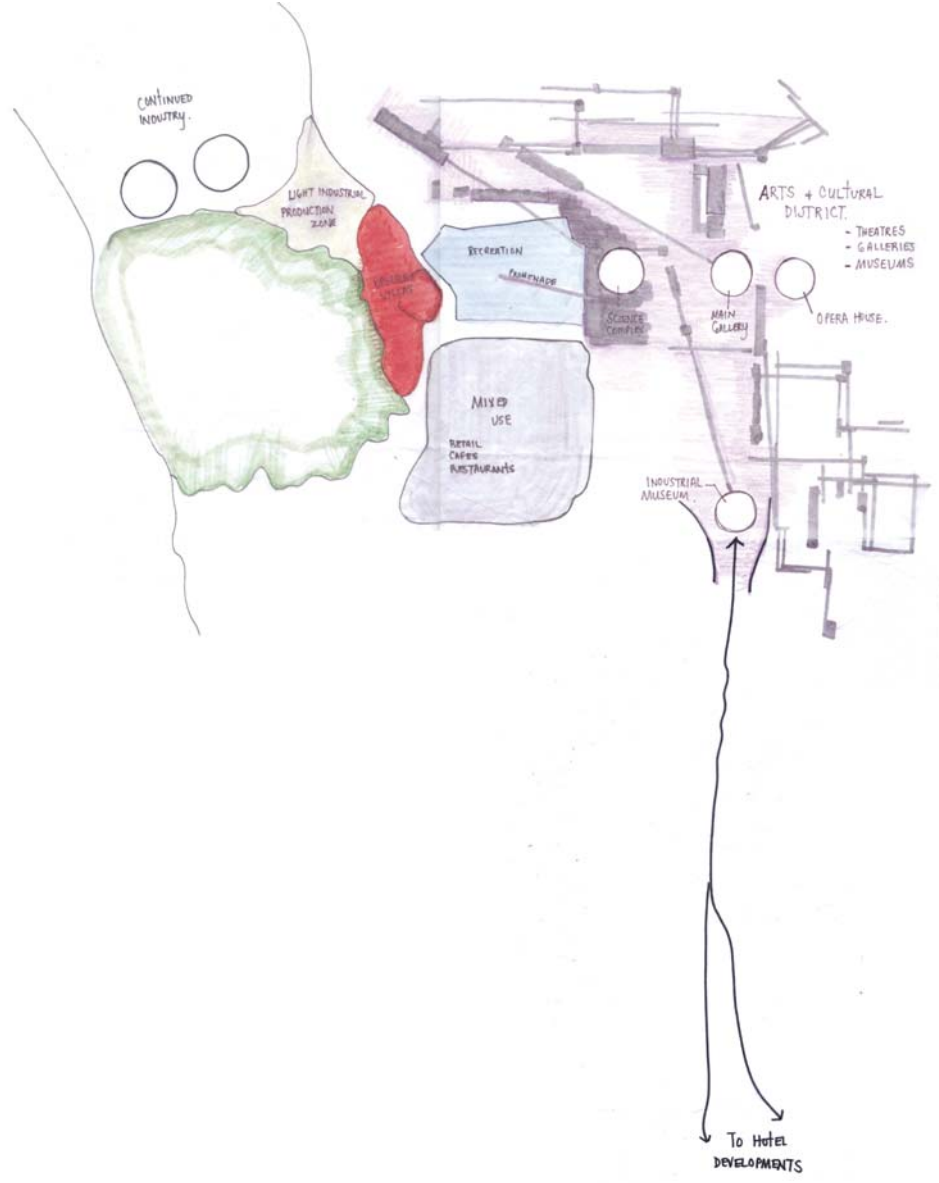
2. Keep the small lake as a center of convergence

### 3. Enhance the natural landscape

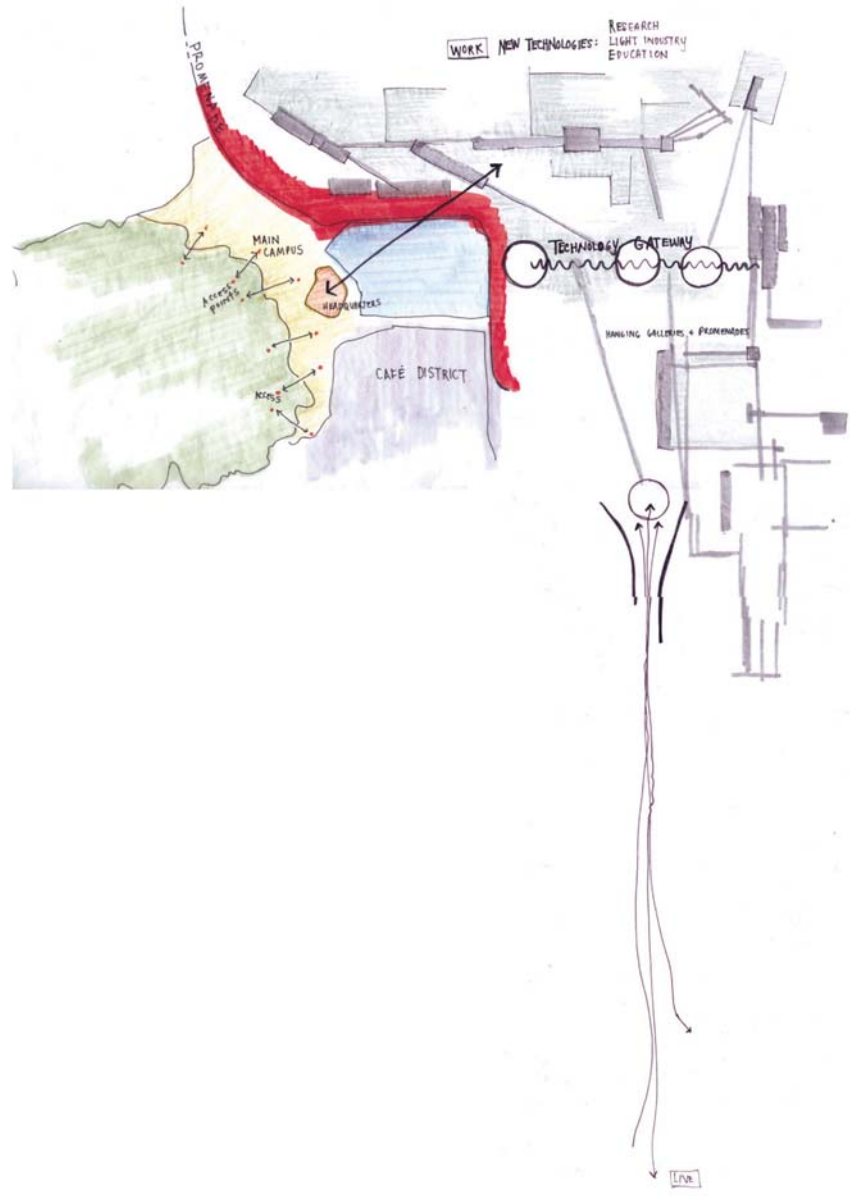
4. Emphasize the location and history of the site and promote its cultural potential .

## 6 Projections

## Scenario 1. Culture, Design & Entertainment



## Scenario 2. Education and New Technologies.





## Scenario 3. Environmental Entreprise

