



# The Mystic River Greenway

City of Medford  
November 30, 2006

**MIT Department of Urban Studies and Planning**

# The Mystic River Greenway

A greenway is a *regional* network that connects:

- **Open Space**

Visibility, identity, easy passage

- **Ecology**

Clean river, diverse landscape/habitat

- **People**

Residents, businesses, institutions

- **Recreation**

Diverse active and passive activities

- **Transportation**

Biking, boating, public transport

- **Time**

Past, present, and future





# Context



# Review of Goals

- Enhance physical and psychological **connections** to the river
- Establish **identity** to reflect unique history, environment, and character
- Restore **ecological integrity**
- **Engage community** in shaping and building the greenway





# Objectives

- Propose connections for continuous recreational/commuter path
- Locate opportunities for views, uses, and river access
- Suggest approach for signage system
- Recommend interventions to restore ecology
- Identify models for community partnership and non-profit collaboration



# General Recommendations: Solidify Connections

- Collaborate with DCR
- Mystic River Master Plan (June 2007)

## LAND OWNERSHIP





# General Recommendations: Views, Access, and Uses

- Restore and maintain views to and from river
- Create physical access for water-based activities
- Involve community in programming uses
  - Playgrounds
  - Picnic areas
  - Gardens
  - Fishing docks
  - Boat launches
  - Cultural events



# General Recommendations: Signage System



- **Purpose**
  - Identity
  - Navigation
  - Education
  - Stewardship
- **Process**
  - Coordinate with DCR
  - Involve residents, businesses, and organizations
  - Design for low maintenance
  - Consider users
- **Content**
  - Do not overwhelm with information
  - Consistent and unique image



# General Recommendations: Ecology



- **Process**
  - Regional coordination
  - Multi-disciplinary team
  - Involve and educate
- **Goals**
  - Reduce maintenance
  - Wildlife habitat
  - Control erosion
  - Filter storm water and CSO pollution
  - Moderate flooding
- **Diversify landscape**
  - Widen and restore riverbank
  - Restore wetlands
  - Replace lawn with meadow
  - Control invasive species
  - Utilize educational/artistic interventions

# General Recommendations: Community Partnerships



- **Structure**
  - Public-private partnership
- **Model**
  - Emerald Necklace Conservancy
- **Potential Partners**
  - Adjacent municipalities
  - DCR
  - Chamber of Commerce
  - Meadow Glen Mall
  - Tufts
  - Medford Public Schools
  - Medford Historical Society
  - Mystic River Watershed Association
  - Local community groups
- **Roles**
  - Fundraising
  - Visioning and planning
  - Maintenance
  - Education



# Selected Interventions: Auburn Street to Winthrop Street



# Selected Interventions: Auburn Street to Winthrop Street



- **Formalize path, signage**
- Diversify landscape and reduce maintenance
- Riverbank restoration and views
- 1-2 neighborhood uses





# Selected Interventions: Auburn Street to Winthrop Street



- Formalize path, signage
- **Diversify landscape and reduce maintenance**
- Riverbank restoration and views
- 1-2 neighborhood uses





# Selected Interventions: Auburn Street to Winthrop Street

- Formalize path, signage
- Diversify landscape and reduce maintenance
- **Riverbank restoration and views**
- 1-2 neighborhood uses





# Selected Interventions: Auburn Street to Winthrop Street

- Formalize path, signage
- Diversify landscape and reduce maintenance
- Riverbank restoration and views
- **1-2 neighborhood uses**





# Selected Interventions: Winthrop St to Medford Square





# Selected Interventions: Winthrop St to Medford Square

- **Maintain pathway**
- Wetlands
- Parking lot and canoe launch
- Alleys
- Views and signs
- Neighborhood use





# Selected Interventions: Winthrop St to Medford Square



- Maintain pathway
- **Wetlands**
- Parking lot and canoe launch
- Alleys
- Views and signs
- Neighborhood use

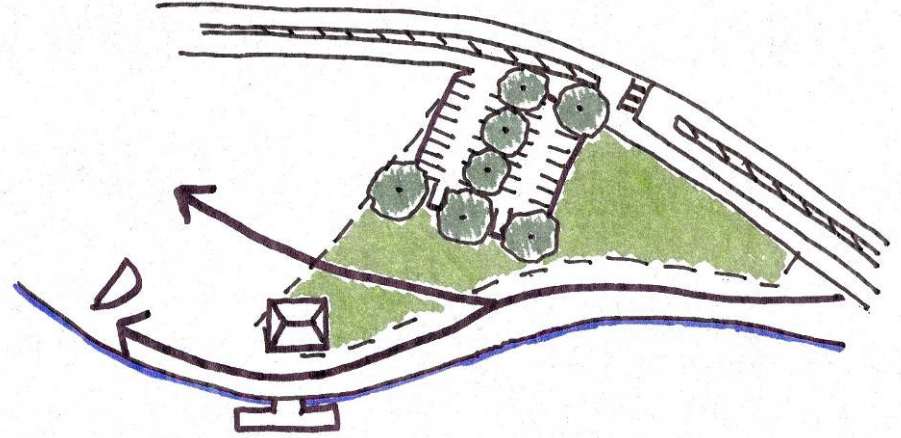




# Selected Interventions: Winthrop St to Medford Square



- Maintain pathway
- Wetlands
- **Parking lot and canoe launch**
- Alleys
- Views and signs
- Neighborhood use



# Selected Interventions: Winthrop St to Medford Square



- Maintain pathway
- Wetlands
- Parking lot and canoe launch
- **Alleys**
- Views and signs
- Neighborhood use





# Selected Interventions: Winthrop St to Medford Square



- Maintain pathway
- Wetlands
- Parking lot and canoe launch
- Alleys
- **Views and signs**
- Neighborhood use





# Selected Interventions: Winthrop St to Medford Square



- Maintain pathway
- Wetlands
- Parking lot and canoe launch
- Alleys
- Views and signs
- **Neighborhood use**





# Selected Interventions: Clippership Drive



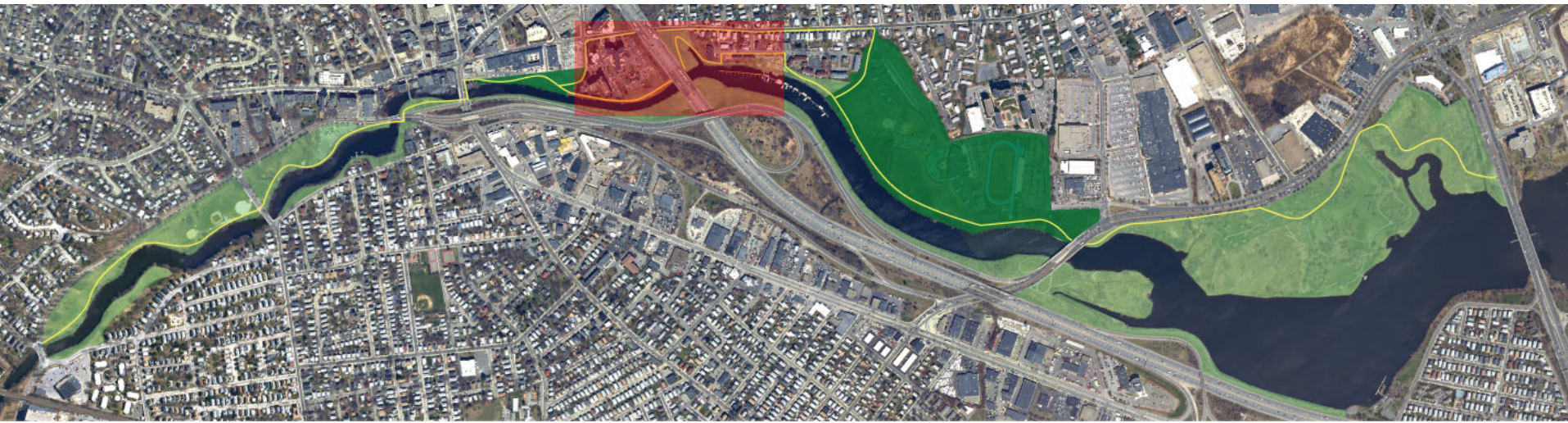
# Selected Interventions: Clippership Drive

- New 1.5 acre formal park
- Extend civic life of Square to River
  - Public Art
  - Historical and environmental education
  - Medford Historical Society
  - Cafes and shops
- Public-private partnership
  - DCR conservation easements





# Selected Interventions: I-93 and the Yacht Club



# Selected Interventions: I-93 and the Yacht Club

- **Short-term route**
- Long-term route





# Selected Interventions: I-93 and the Yacht Club

- Short-term route
- **Long-term route**





# Selected Interventions: I-93 and the Yacht Club

- Short-term route
- **Long-term route**





# Selected Interventions: I-93 and the Yacht Club

- Short-term route
- **Long-term route**





# Selected Interventions: I-93 and the Yacht Club

- Short-term route
- **Long-term route**





# Selected Interventions: I-93 and the Yacht Club

- Short-term route
- **Long-term route**





# Selected Interventions: Riverbend Park





# Selected Interventions: Riverbend Park

- Improve signage and wayfinding





# Selected Interventions: Mystic River Reservation





# Selected Interventions: Mystic River Reservation

- **Improve signage and wayfinding**
- **Reduce lawn maintenance**
- Restore dock
- Enhance views



# Selected Interventions: Mystic River Reservation

- Improve signage and wayfinding
- Reduce lawn maintenance
- **Restore dock**
- Enhance views





# Selected Interventions: Mystic River Reservation

- Improve signage and wayfinding
- Reduce lawn maintenance
- Restore dock
- **Enhance views**





# Next Steps...

- **Collaborate with DCR on Mystic River master plan**
  - Concept due for completion by June 2007
- **Form Medford Greenway Committee**
  - Citizens, Municipal officials, Institutions, Businesses, Community groups
- **Tasks**
  - Continue ongoing dialogue with DCR
  - Investigate funding sources
  - Develop public-private partnership organization

