

**11.520: A Workshop on Geographic Information Systems**

**11.188: Urban Planning and Social Science Laboratory**

**Lab Exercise 1:  
ArcGIS Basics**

---

In this exercise, we will use coverages of Cambridge roads and U.S. Census block group data to explore the basic mapping capabilities of ArcGIS.

---

**I. Setting Up a Work Environment**

**A. Start an ArcGIS Session**

We firstly need to Log onto a PC that can run ArcGIS and access the class data lockers. We will use a WinAthena PC such as those in MIT or in CRN facilities. The user name and password are the same as our Athena IDs and passwords.

Step 1. Find the lab instruction on the class website.

Launch any web browser on your PC's desktop, either Mozilla, the Netscape web browser, or Internet Explore and open the page you are reading now. Keep this exercise open in a web browser while you work. You may print a copy of this exercise if you wish, but we recommend working directly from a browser window. If you are working in the lab of Building 37, one of the monitor can be used to display the lab instruction. To do that, you can grab the browser with your mouse and move to the empty screen.

Step 2. Attach 11.520 Locker

Much of our class data reside in the course locker, 11.520.

Step 3. Start ArcMap by following these steps:

1. click the Start button the left bottom corner.
2. Move the mouse over the item Programs.
3. Move the mouse over the item ArcGIS
4. Move the mouse over the item ArcMap and Click.

Please wait patiently for ArcMap to launch. The program takes awhile to come up. Notice that in the program group of ArcGIS, there is another one called ArcCatalog, which we will use soon.

## B. ArcMap Document Setup

When ArcMap first launches, you should see an "ArcMap" window, that prompts you to create or open a new map. Click *A new empty map* button to make this window go away.

You should now be looking at an "empty" document which has "Untitled" in the title bar that looks like the image in Fig. 2.

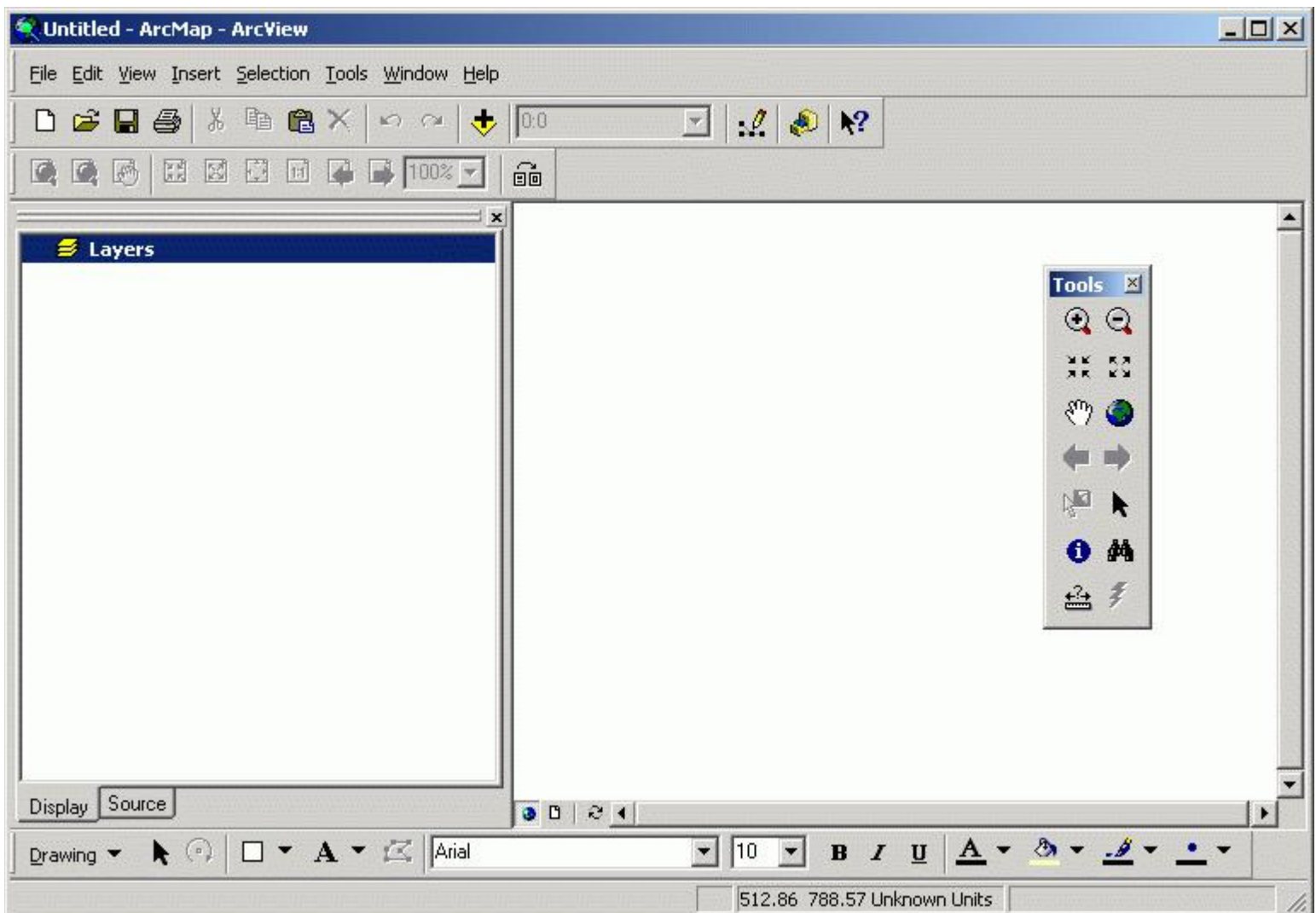


Fig. 2. The Untitled map document

This is approximately what ArcMap might look like. All of the controls are dockable. That is, the tools panel, which has the pan and zoom tools, is free floating. You can anchor it to the top bar of the window, if you wish, which makes it easier to find. My version is what I have modified slightly from the base that you will see when you start ArcMAP.


What's on the interface, besides the pan and zoom tools? Some drawing tools (see the bottom of the window), some menus which give you access to customizing tools among other things, and some map management tools. We will use many of these in this course.

## II. Visualizing Your Data

### A. Getting Data Into ArcMap

We are now ready to begin looking at data sets. You will spend most of your time in this map document window, experimenting with good ways to symbolize a data set and overlaying various spatial data sets to create a map. Typical spatial data sets include ArcInfo *coverages* and ArcMap *shapefiles*.

When a data set is brought into a map document, we will call it a layer. We need a new term because the same data set can be used to build many different layers, depending on the symbology used and other variables.

We can add data sets to this map by clicking on the "Add Data" button  in the toolbar. Try this now. We'll start by adding a data set of the Cambridge city boundary, which is stored at **m:\data**.

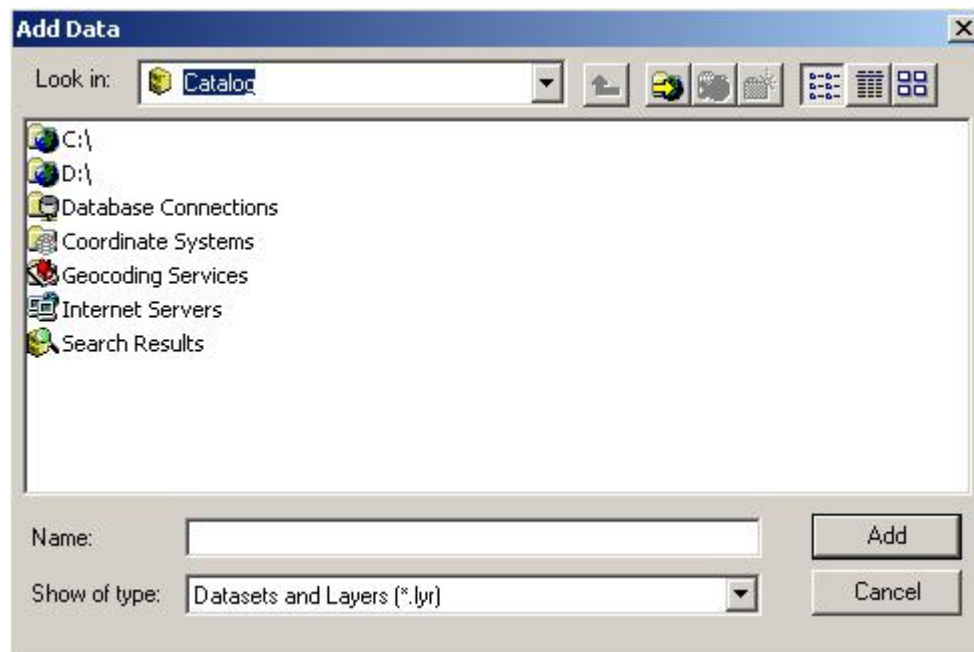


Fig. 3. Add Data

Note that the dialog box for adding data begins with Catalog. Local drivers such as C and D are registered with Catalog by default. You need to register other drives manually.

Click the "Connect to Folder" Button .

In the "Connect to Folder" window, choose [M:\] then [data] from directory tree. It contains all data sets needed for this lab.

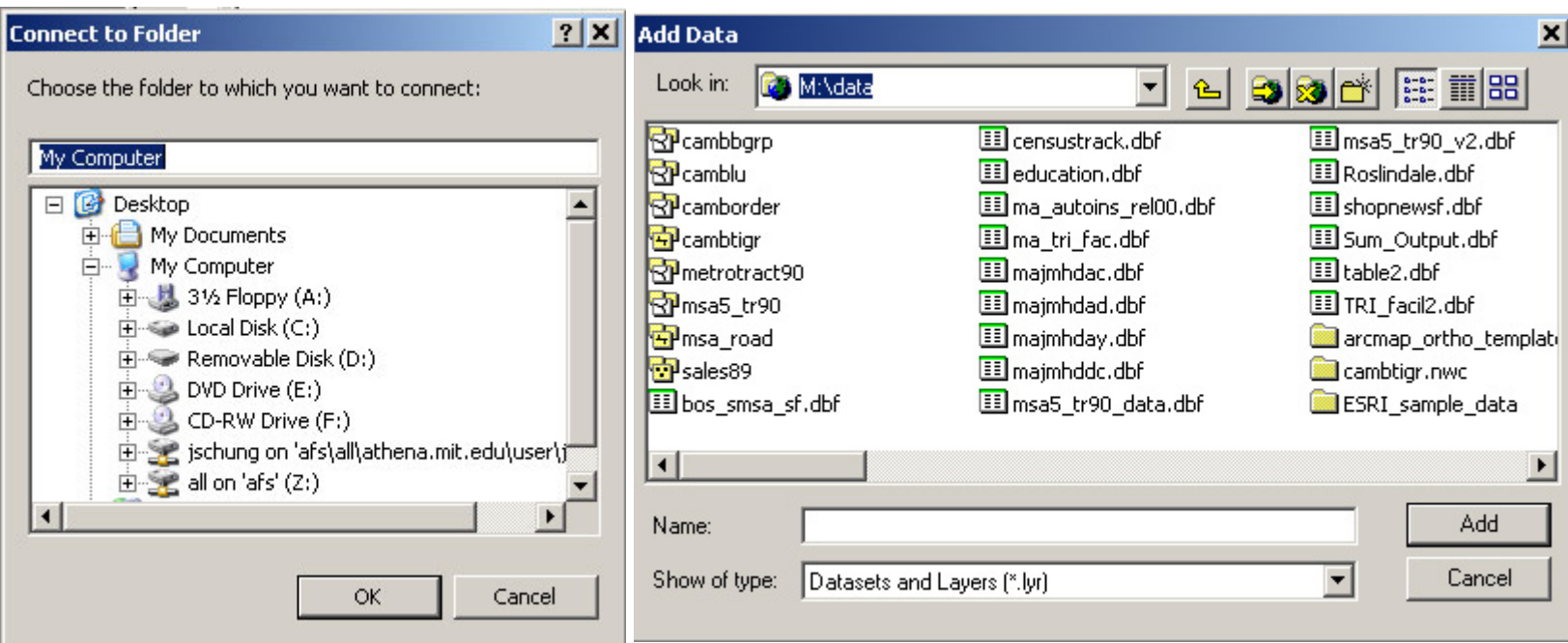

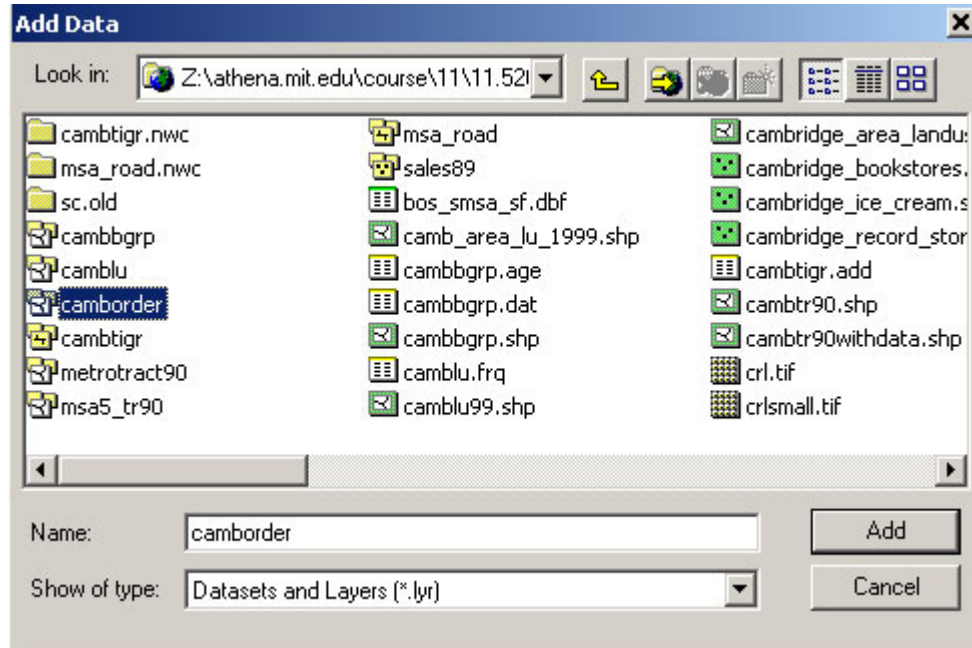


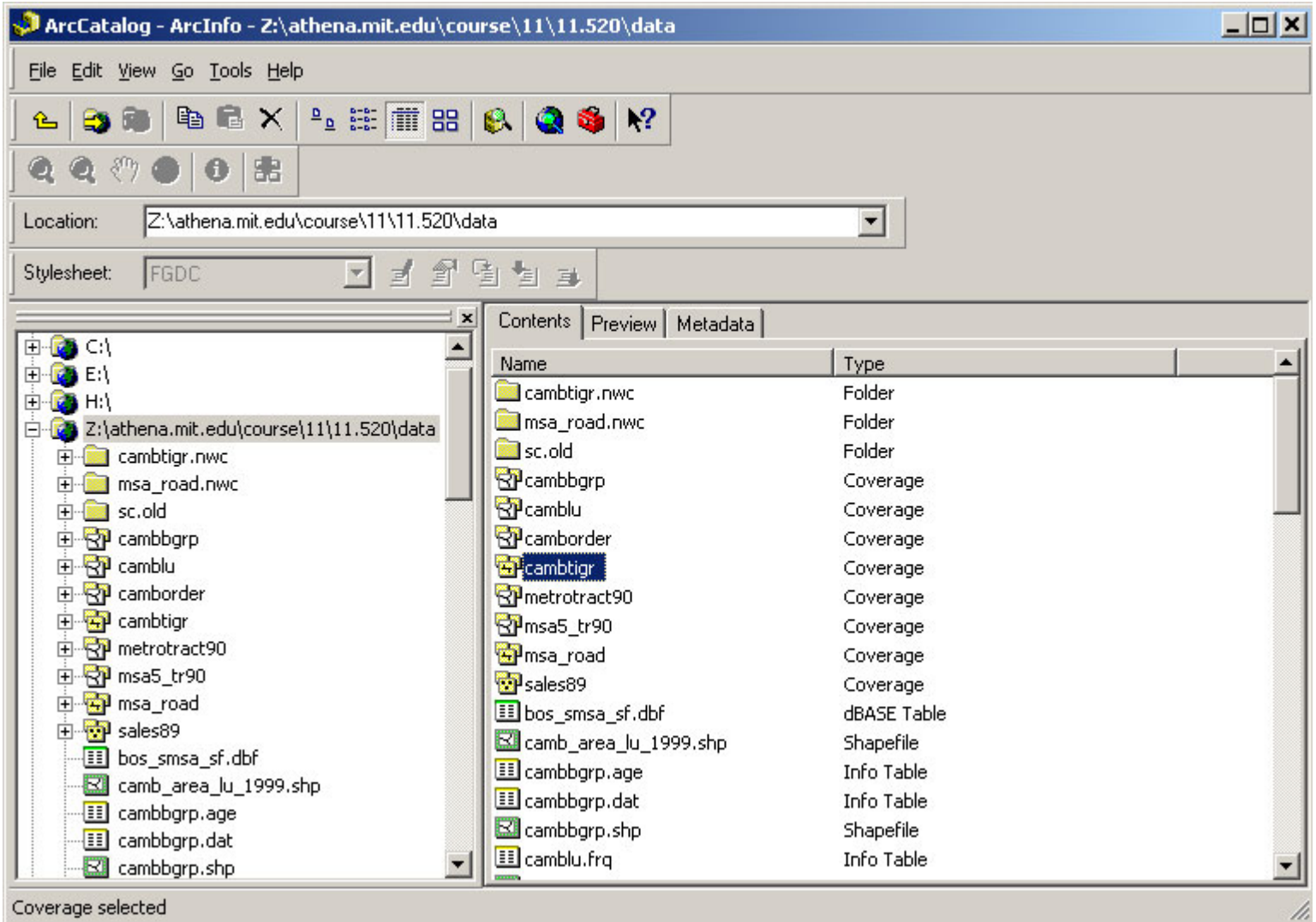
Fig. 4. Connect data folder

Click OK and go back to the "add data" window. Now you are in the right directory, you should be able to see a number of data sets in the window. Select the **cambborder** data set, which contains the border of the city of Cambridge, and then Add it.

Now, let's add another dataset, the cambridge tiger file, in an alternative way. Click the ArcCatalog icon  on ArcMap's toolbar. This starts ArcCatalog. The alternative way to start it is to start it from the program groups. Since you have already registered drive **M**. You can see it in the Catalog window. Otherwise, you need to register it by clicking the **Connect to Folder** button, which is under the edit menu. You could also register the same class data locker as: Z:\afs\athena.mit.edu\course\11\11.520\data. Browse the folders as you do it with windows explorer and find **cambtigr**. To add this dataset to ArcMap, you can grab it with your mouse and move to your ArcMap window.



**Fig. 5. Adding Cambridge border coverage via drive Z:**



**Fig. 6. Add data from ArcCatalog**

Now add the following two layers to your ArcMap, with either of the two above methods. (Since you have already registered the M and/or Z drives, you don't need to register them again).

- **cambbgrp.shp** (The U.S. Census 1990 block groups in Cambridge)
- **sales89\_shape.shp** (Cambridge housing sales in 1989)

You should be able to get a map window looking like the following figure.

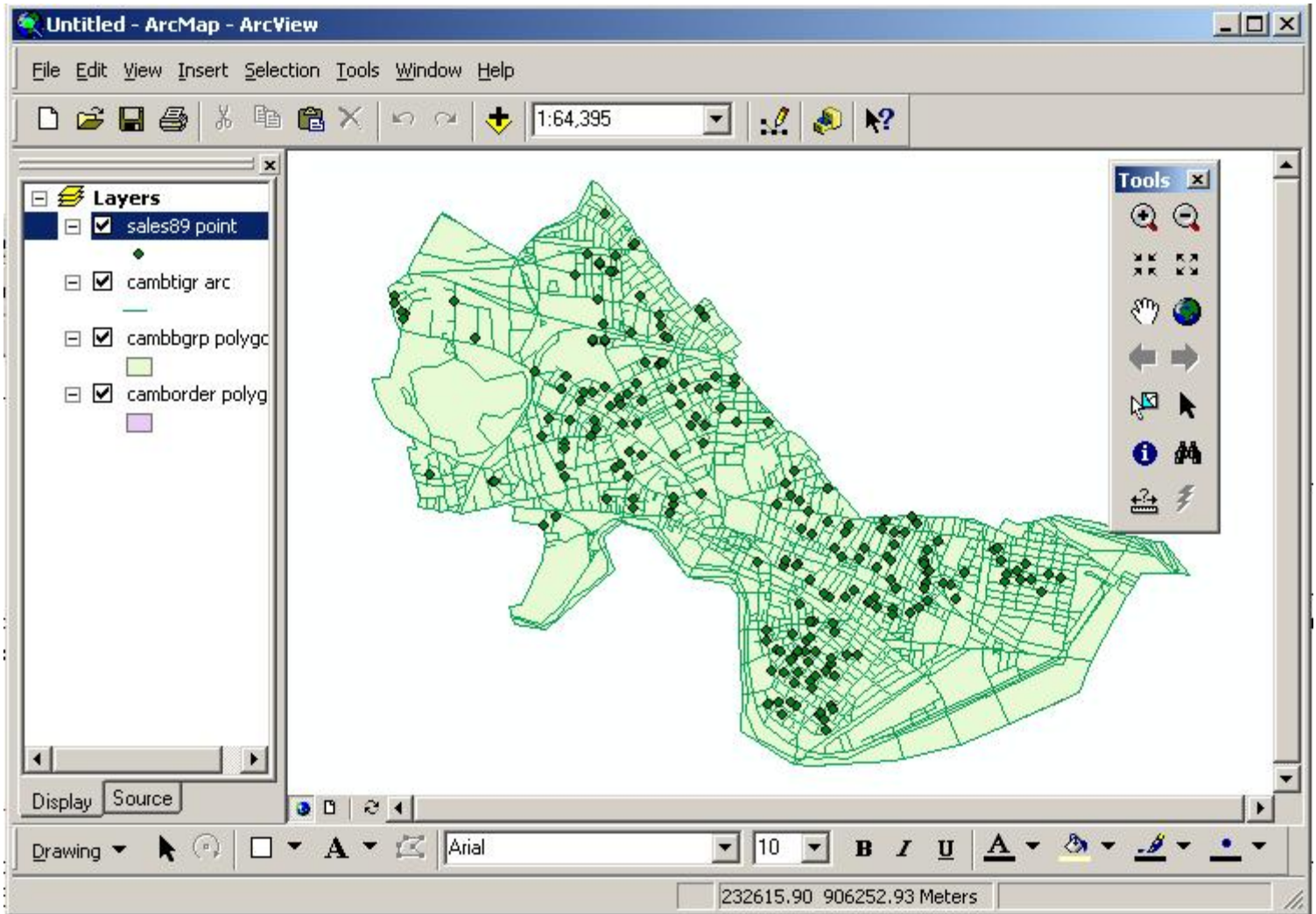


Fig. 7. ArcMap window with GIS layers

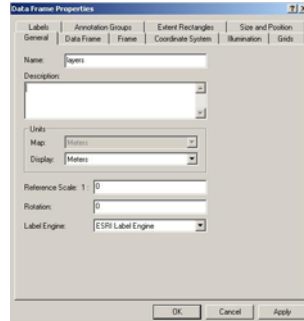
These four layers are currently visible. To activate a layer or deactivate it, just click on the box next to that layer's title. If the box is checked it means that the layer is visible. Initially, all the checkboxes are checked, and all data will be visible in the data display area. Experiment with turning layers on and off.

Notice that some layers may obscure others. That's because the themes are drawn from bottom to top as listed in the data frame area. You can change the drawing order of the layers by clicking and dragging a layer in the data frame area. Try this now to see how the display changes while you arrange the layers in different ways. But finally, they should appear in the following order:

- Sales89
- Cambtigr
- Cambbgrp
- Camborder

Your window should now resemble the above figure. Note that since ArcMap chooses the initial colors for themes randomly, your window will probably have different colors than those shown here. Also, the name of the layers may also be a bit different, depends on whether you use a coverage or a shape file.




At this point it is important to set a few properties for this document file. Select **Data Frame Properties** under the **View** menu. The "data frame properties" window will show up. Click "general". The window looks like the following figure.



**Fig. 8. Data Frame Property Window**

Now change the name of the view from **layers** to **Lab Exercise 1**. Also notice that in this dialog box the map units are set to meters, in which the spatial coordinates of the data are actually stored in the files on the disk. The display units, in contrast, refer only to how distances will be measured for display. We can set this to any units we like; we suggest feet here because that is a familiar unit (for Americans) and is appropriate to the scale of the map.

Now take a few minutes to familiarize yourself with some toolbar buttons. You can pan and zoom in the view window. First, you may wish to enlarge both the ArcMap window and the data display area so that you can see more detail in the image. Also try these buttons out by clicking on them in the toolbar, then clicking in the data display area:


- Zoom In**  Click to zoom in on that location. Click and drag to zoom to a particular bounding box.
- Zoom Out**  Click to zoom out centered on the location of the click.
- Pan**  Click and drag to pan around the map area.


Discover functions of the other buttons on the toolbar on your own. Notice that as you move your mouse cursor over the button, a line of descriptive text will appear, which explains the function of the button.



## B. Examining Attribute Data

Click on the small boxes next to the each layers to make them invisible. Then turn on the layer **Cambbgrp** in the data frame. Now you can see the outlines of Cambridge Census block groups.

Click once on the info ("i") tool . This button is located in the toolbar. Move the mouse into the map window and click on a block group. The attributes associated with that block group appear in a popup window. To see the data for all of the block groups, move your mouse over the name of the layer in the data frame and do a right click. On the pop-up menu, choose "open attribute table". Notice that if you click on a record in the table, the corresponding block group is highlighted on the map.

Now we can save the map document to our working directory. Do this by clicking the save button . Go to your Athena locker, which is your **H:** driver. We suggest you create a sub-directory called **11.520** or **11.188** within your **H:\Private** directory. Within this directory, you should create another folder called **lab1**. Now you can save your map document file to this directory. Give this document file whatever name you like. It does not same all the data you are using - only the file locations, data frame properties, symbol information and the like that are needed for ArcMAP to recreate the same state of your work that existed when you saved the file. (Hence, the saved document file - with an **.mxd** filename extension - will not work properly if the class locker is not mapped to the same drive as it was when you saved the file.)

## III. Basic Map Making

### A. Simple Symbolization

Click on the check box next to the **Cambtigr** layer to make it visible. You should see all Cambridge roads (plus some other features such as railroads) being drawn on the map then. If you had moved, say, **Cambgrp** above **Cambtigr** in the legend, the TIGER([Topologically Integrated Geographic Encoding and Referencing system](#)) arcs would then be quickly covered up by the block groups. If so, you can fix this by dragging the **Cambtigr** layer up above the **Cambbgrp** layer. Now we see TIGER arcs on top of the block groups.

The name **Cambtigr** may not be meaningful to everyone viewing this display. We can easily rename the layer in the property window to something more readable. Right click once on the word **Cambtigr** and select **Properties** from the pop up menu. Under "General", change layer name from **Cambtigr** to **Cambridge TIGER**. Notice that the data source (listed under "Source:") does not change. After you click the **OK** button, you will see the new layer name in the data frame. You may need to need to make the data frame window wider to see all the text. Move the mouse over the line to the right of the data frame area. When the cursor changes to an I-beam with arrows on either side, you can click and drag to resize the data frame area.

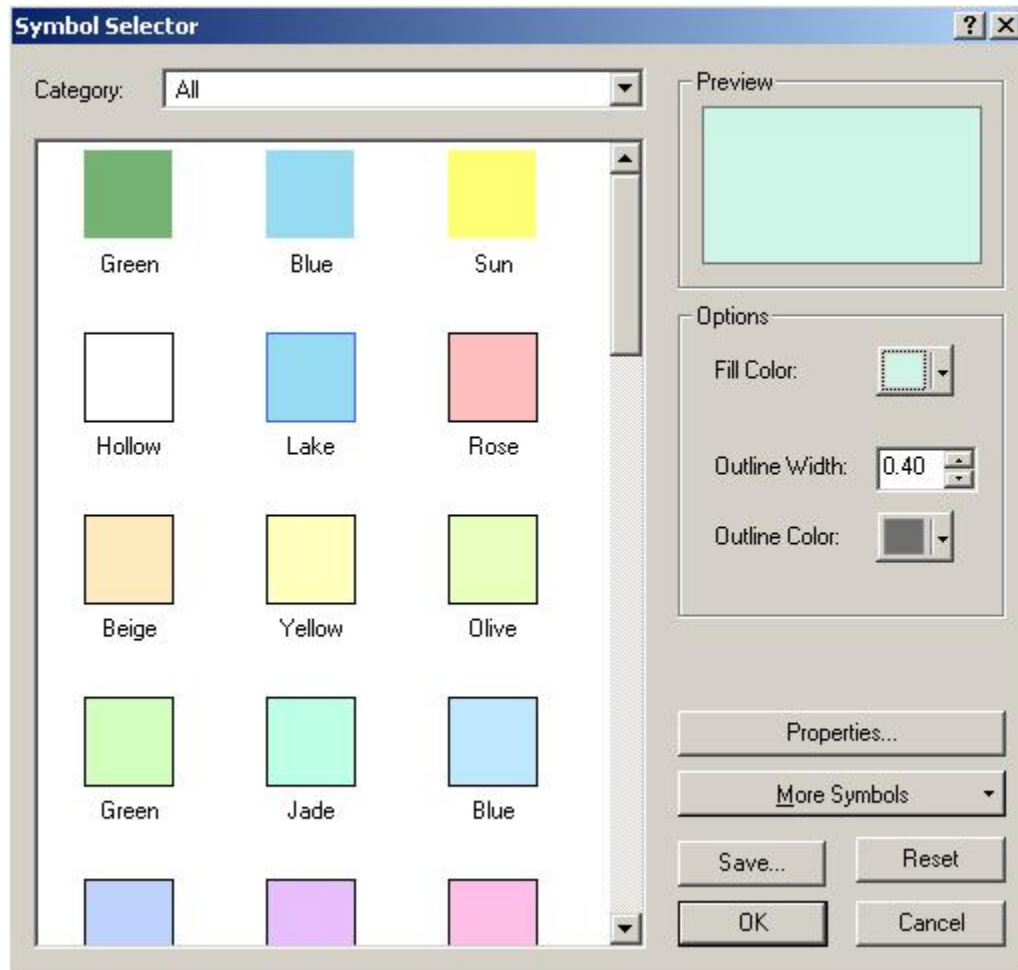


Fig. 9. Symbol Selector Window

For now, the layer **Camborder** is actually not visible even when the box is checked. To make it visible we can drag it above the **Cambridge TIGER** layer. However, it obscures the roads. Instead of moving **Camborder** to the bottom again, we can change the way it is displayed so that the border is drawn but the area is not filled in. Double-click on the legend, which is the rectangle under the layer name **Camborder** in the **Symbol Selector** window as shown by Fig. 10, Click once on the downward arrow of the "Fill Color" option, which is at the middle left. And then choose "No Color". This sets the fill color of the shape to none (i.e., transparent). The fill pattern had been the colored box, meaning that shapes should be filled with a solid color.

Also, increase the outline width from 0.40 to 2. Click "OK". Now you are able to see clearly at the same time the boundary of the city and the block group boundaries.

Likewise, you can improve the way to visualize the tiger lines. Try that by yourself.

## B. Thematic Symbolization

### *Your first thematic map*

Double-click on **cambbgrp** to open the layer property window. This time we will manually symbolize the theme. Up to now, all the layers have used the default legend type, "Single Symbol." Now, under "Symbology:" select "Quantities" and then "Graduated Color." Change the classification field value to "Med\_hh\_inc." Notice that ArcMap automatically divides the income data into five ranges and assigns a color to each. These colors will not actually be shown in the map until we explicitly tell ArcMap to do so.

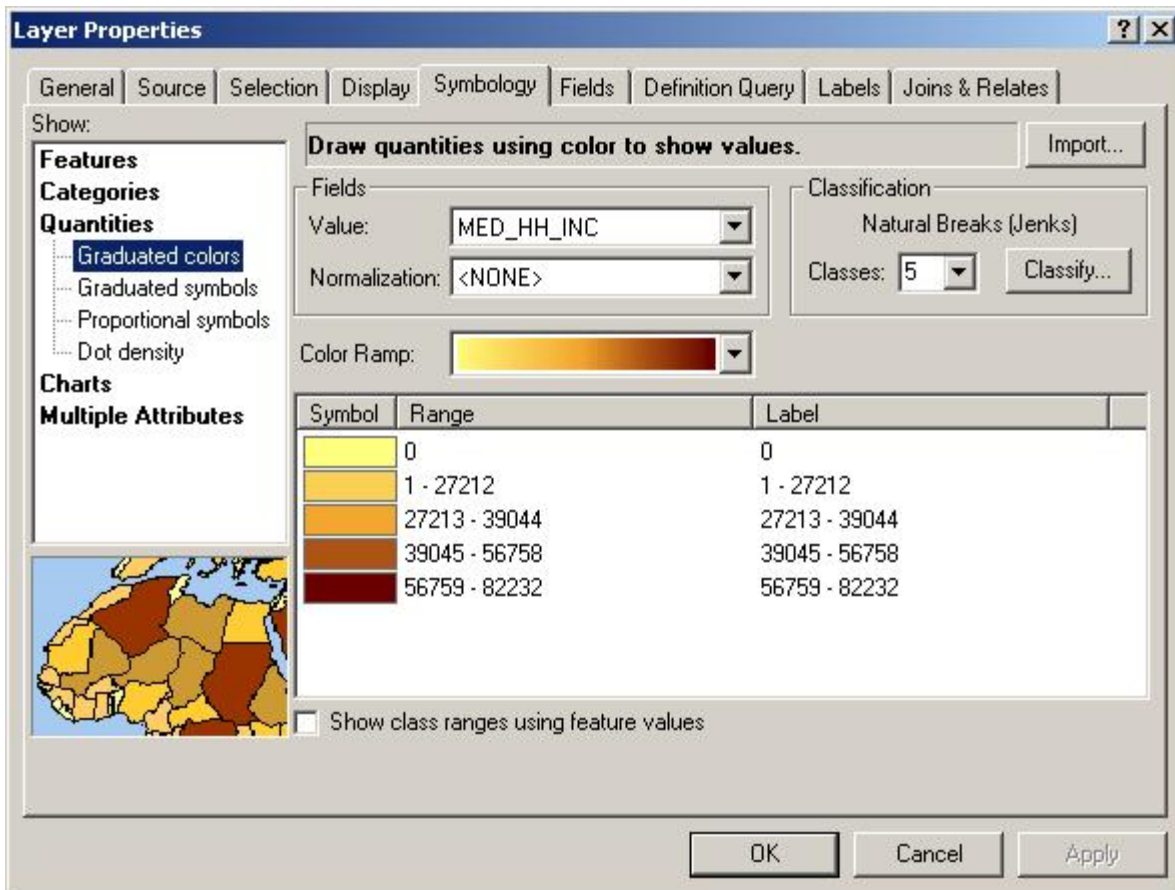


Fig. 10. Symbology Window

Often we will want to make some adjustments to the way these ranges are created. To do so, click on the **Classify** button. The **Classification** window will appear. Under "Classification Method:" select **Quantile** and click **OK**.

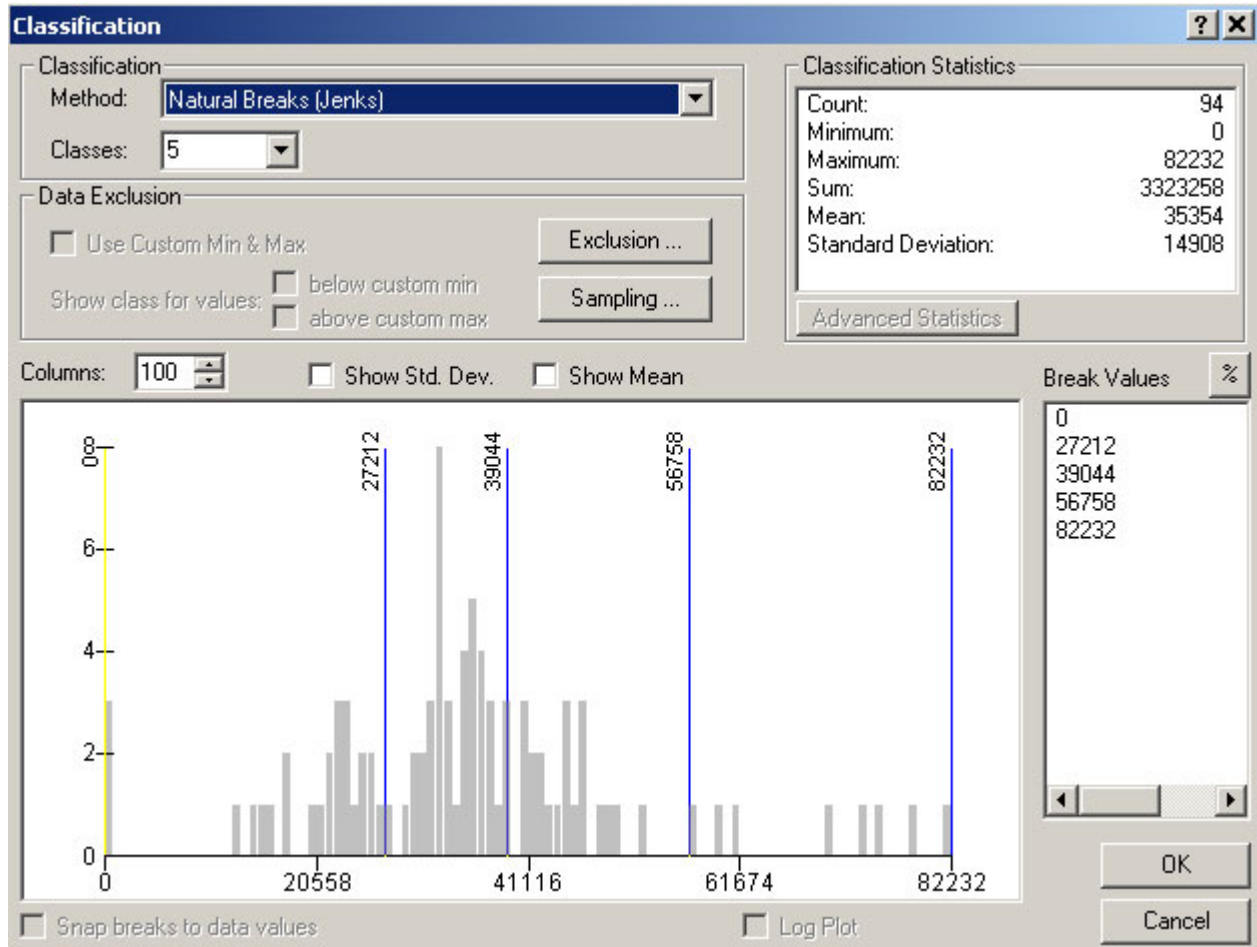




Fig. 11. Classification Window

Back in the symbology window notice that the ranges have changed to reflect the new classification scheme. Now click **Apply** to make this new scheme take effect in the map. You've made your first thematic map, with median household income divided into 5 categories, each consisting of 20% of the block groups. If some boundaries of some block groups are highlighted, select the feature selection tool , and then click on the blank map area.

Notice that the first income range is 0 - 23472. On the surface, this may seem fine, but actually in this data set, the value zero is used to indicate that there is no data for that block group, not that the median income is zero (which is extremely unlikely). You can confirm that the zero value is an outlier by taking a quick look at the raw data. Close the property window and bring forward the attribute table of Cambbrp. Right click the layer's name in the data frame and select **Open Attribute Table** on the pop-up menu.

Scroll to the right in this window until you see the `Med_hh_inc` column. Right click on the column heading for `Med_hh_inc`; it will be highlighted in reverse video when you do so. Now sort the rows in ascending order using the **Sort Ascending** option . You

should end up with a window that resembles Fig. 12. Notice that there are three blockgroups with zero values, and the next higher value is 13009.

TRACT	BLOCKG	LANDACRE	HOUSEHOLD	MED_HH						
3537	5	31.63	0	0						
3523	2	67.95	0	0						
3524	2	39.78	0	0						
3532	2	37.81	471	13009						
3527	2	16.06	212	14453						
3530	3	29.65	930	15586						
3524	3	44.73	481	16080						
3527	4	11.96	212	17221						
3550	2	26.42	386	18066						
3549	2	55.85	1216	18625						
3525	2	9.14	180	21286						
3522	1	25.03	830	21523						
3536	4	80.56	235	21985						
3527	3	8.4	383	22788						
3535	2	21.5	376	23233						
3523	1	30.05	217	22933						
3539	1	26.69	369	23036						
3531	4	118.65	388	23317						
3525	3	15.55	360	23472						

Fig. 12. Sorted Attributes of Cambbgrp

We can prevent such situations from distorting our maps by specifying a "null value" in the classification. Go back to the classification window and click on the **Exclusion** button. The **Data Exclusion Properties** window will appear.

Specify the query as what is shown in Fig. 13. And then go to the Legend Tab. Type in "Null Value" in the label field. Make sure the check box for **Show Symbol for Excluded Data** is checked. Click **OK**. to close the window. Notice that all but the last of the ranges changed; in particular, the first range is now 13009 - 25335.

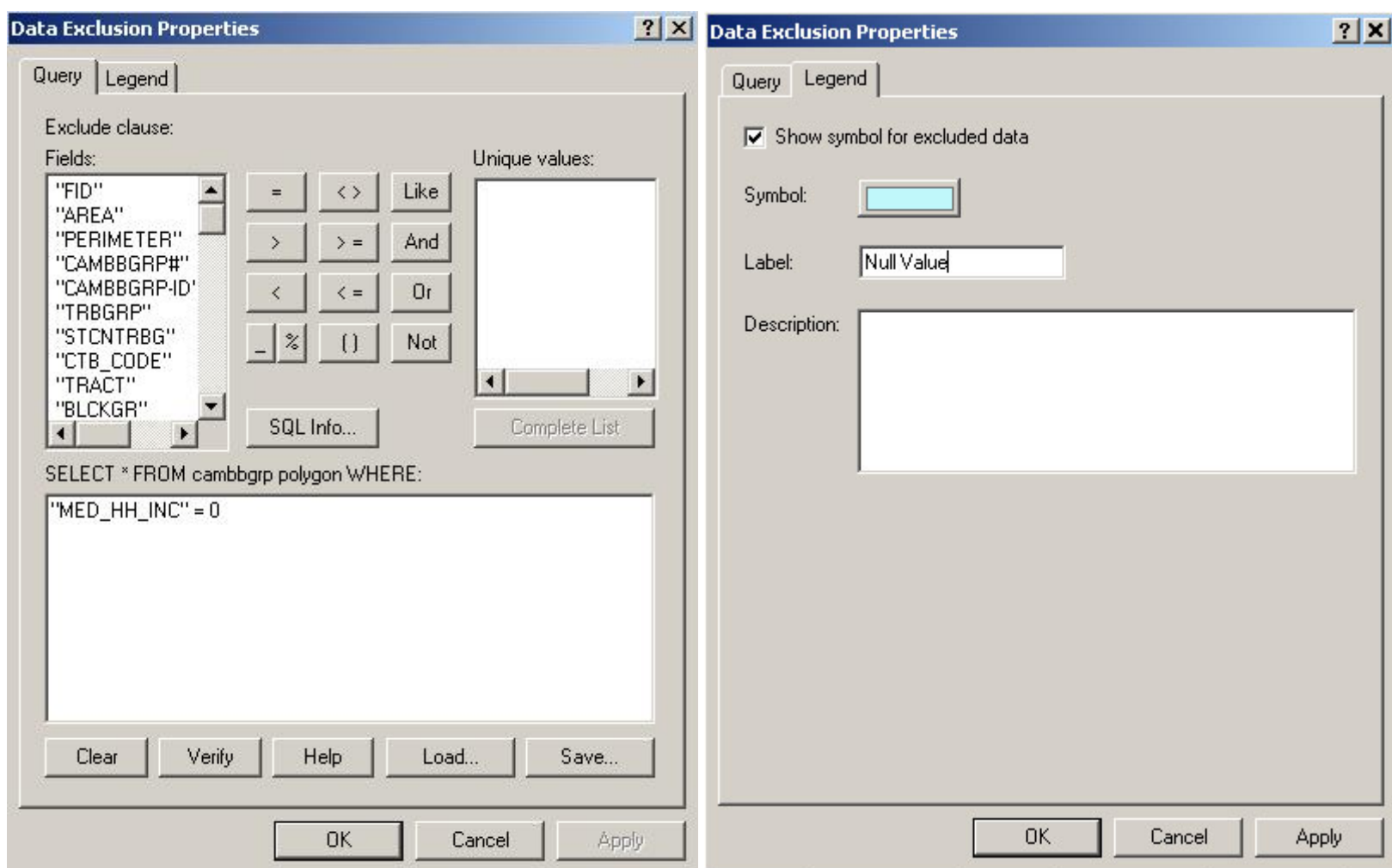


Fig. 13. Exclude Non Value Records

Now we can experiment with different classification methods. Try going back to the symbology window, click "classify" button and classifying `Med_hh_inc` by "Standard Deviation" instead of "Quantile." The mean should match the mean generated under statistics. In fact, once you become a proficient map maker, you might not use these preset classification schemes at all. You could type your own ranges into the "Value" field of the *Legend Editor*, basing your ranges on standard deviation, variance, quartiles, quintiles, or any other defensible scheme you devise.

What are these different classification methods about? Now is good time to use the ArcGIS online help system to get some more information. Select *ArcGIS desktop help* from the *Help* menu. The help system may take some time to load. In the *ArcGIS Desktop Help* window, click on the "Index" tab. In the keyword box, type the first few letters of the word you're looking for, i.e. classification. You will find "schemes" in the returned query list. Click "schemes", explanation for the classification method will show up in the right area.

### *More thematic mapping*

Now let's go back to the ArcMap window. Right click once on the **Cambbgrp** layer and select **Copy** from the pop up menu. Right click on the data frame name **Lab Exercise 1**, select **Paste Layer** from the pop up menu. Now you will have two identical **Cambbgrp** layers in your data view. Rename the new layer from **Cambbgrp** to **Households**. You can do this as by bringing up the layer property window, as indicated in the previous section. However, you can also do it by click the layer name twice, as you change a file name in a windows explorer. (notice that it is not a double-click.)

Now let's make a basic thematic map showing the number of households per block group. Double-click on the new layer named **Households** to load the symbology window. Under "Symbology" select "Graduated Color". Change the classification field from **med\_hh\_inc** to **Households**. Click on the **Classify** button to open the **Classification** window. Use these options:

Type: **Quantile**

Number of classes: **5**

Right click once on the **Households** layer and select **Copy** from the pop up menu. Right click on the data frame name **lab exercise 1** and Select **Paste layer** from the pop up menu. Now we have three versions of the block groups visible in the legend. Change the name of newest one from **Households** to **Household Density**. Double-click on the new layer to load its property window. Change the normalization field from **NONE** to **Landacre**. Remember to go to the classification window and change the classification method to **Quantile**. The default one is **Natural Breaks**.

Instead of showing raw counts of households per block group, the **Household Density** layer shows households per acre in each block group. The density layer *normalizes* the raw counts by dividing them by the land area. Note that a density map is more meaningful than a map of block-group counts since the counts are so sensitive to where you draw the block group boundaries. If some block groups were divided in two, the thematic map of counts in each block group would change a lot, but the density wouldn't change. Use the checkboxes to toggle the visibility of the layers. Notice how different the two maps look and understand that household density is quite different from total households. Also understand what the normalize command did. It took the number of households in the block group and divided it by the number of acres in the block group. Normalization of data is an important issue that we will return to during the semester.

Make a new copy of the household density layer and change its name to **Household Density SD**. Load its symbology window with a double-click on the layer name. Make sure your classification field is "Households" and that you are normalizing by "Landacre." Click on the "Classify..." button and choose "Standard Deviation" (accept the defaults for the other fields). Apply your changes. This map helps us see how much density differs across the city. We see mainly light colors (within +/- 1 standard deviation from the mean), leading us to believe that Cambridge households are relatively evenly

spread around the city. This makes sense because there are no (or few) 40-story high density apartment buildings, few areas with single-family homes on large lots, and few completely nonresidential districts.

### *Mapping point data*

So far we've only looked at polygon data. Mapping point data (often called dot density mapping) offers new challenges and opportunities. Make the layer `sales89` visible. We see that property sales were pretty evenly spread across the city in 1989 (except in a few block groups, most notably around MIT). Simply looking at *where* sales were isn't very interesting in this case.

Load the symbology window with a double-click. Choose the "Graduated Symbol" legend type and classify *on* "Realprice" and classify *by* "Quantile." Apply your changes. This gives us an idea of where the high-priced sales were. Go back into the symbology window and experiment with manually changing the colors and sizes of the dots. Also make a copy of the theme and try mapping the data using "Graduated Color" instead of "Graduated Symbol." Which method do you think is better?

## IV. Getting Your Work on Paper

Configure your data display window to show `Income` shaded thematically, `Cambridge TIGER`, `sales89`, and `Camborder`. Turn off all other layers. Now you are ready to make a map. Under the *View* menu select *Layout View*. You get a default map layout in the data display area. We've worked with data layers in the data view, and now we are working with a layout document. Although we can print a map directly (using the *Print* command under the *File* menu), it is impossible to control exactly how it will look on the page without using a layout. Besides the GIS layers, a layout usually also include a title, legend, scale bar and north arrow. These are the most basic components of a map.

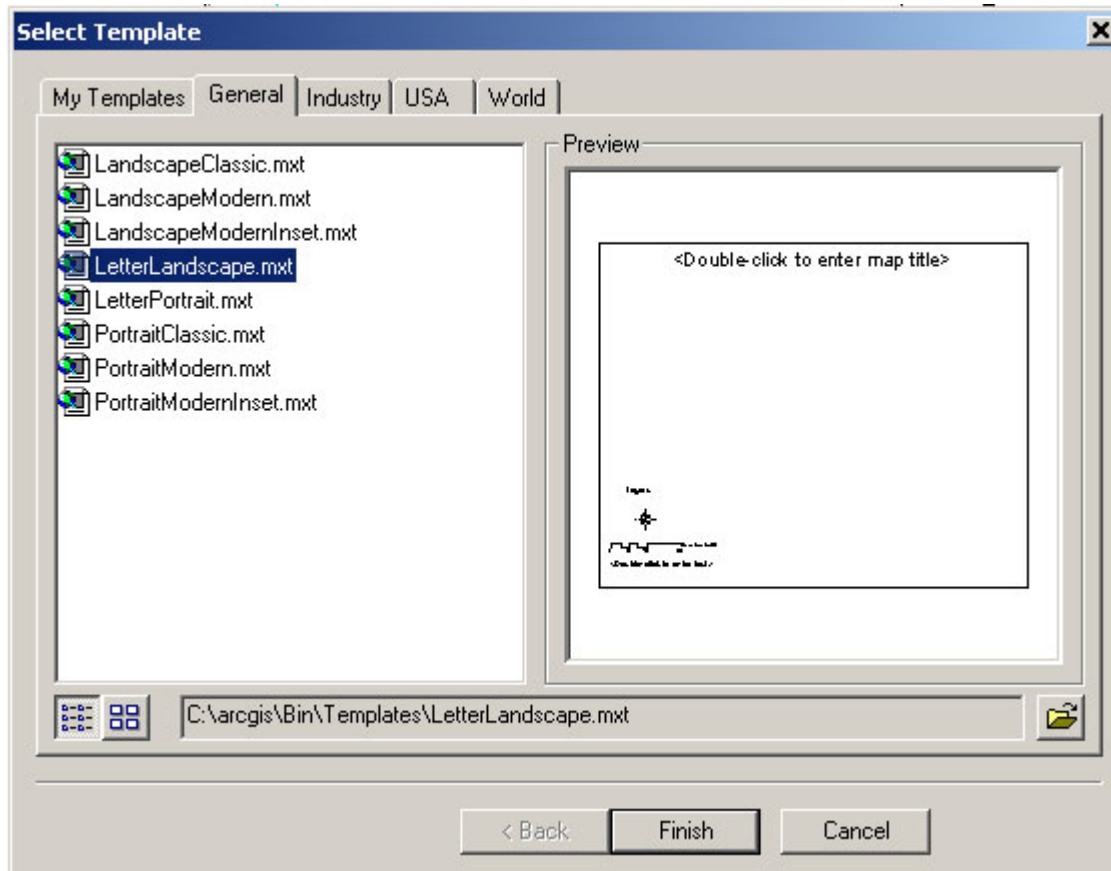
This default map layout has no title, scale bar or legend. You can either insert these components one by one or apply a template. Let's first apply a template. Click the last button on the layout tool bar, which is "change layout".



Fig. 14. Layout Tool bar

Select "LetterLandscape.mxt" under **General** tab and click "finish" button.





**Fig. 15. Applying a map Template**

This template adds legend, North arrow and scale bar to the map layout. But the map title is still empty.

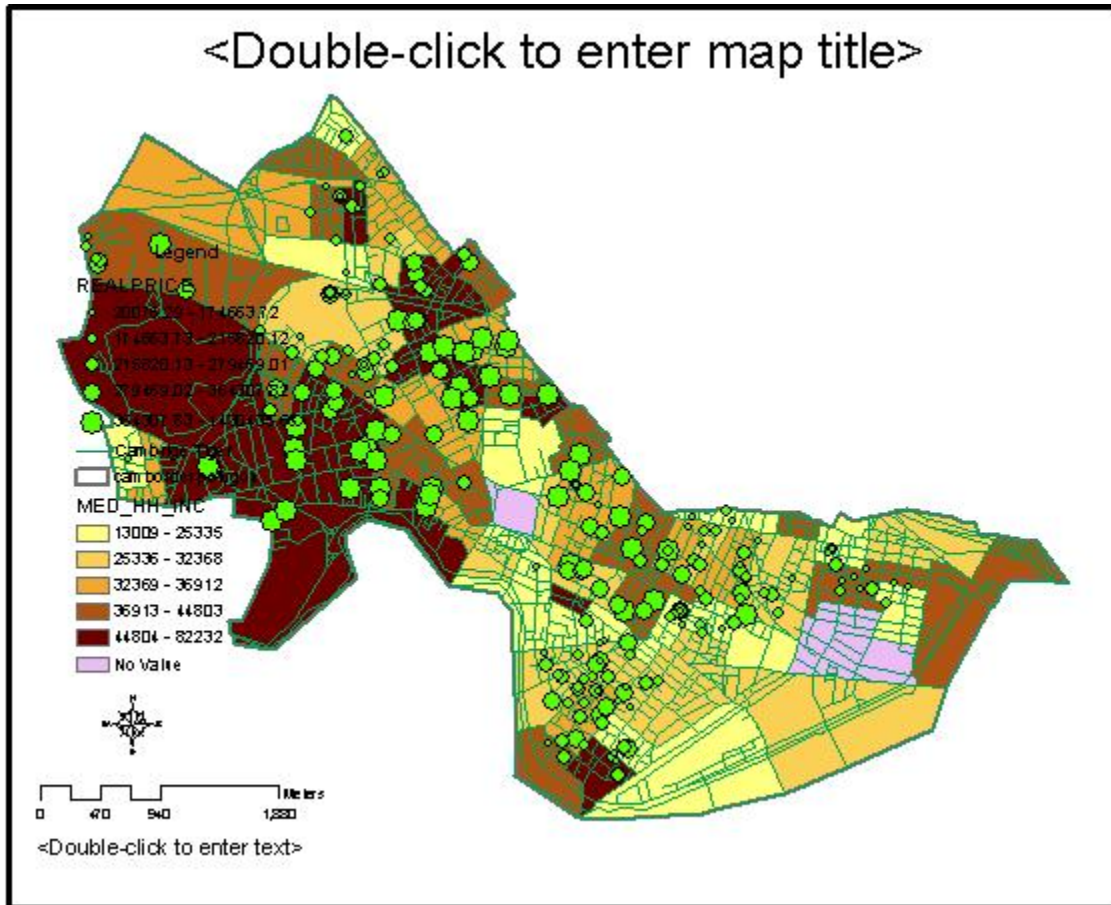


Fig. 16. Map Layout After Applying a Template

To add the title, double click on **<Double click here to enter the title>**. In the text box of the property window, type in **Lab Exercise 1**.

Additionally, we need to add a few more elements to the map:

- the sources of the data
- subtitles
- your name
- today's date

Let's add the data source first. Click **Text** under the **Insert** menu. A small text box shows up in the middle of the map. Double click the text box to bring up the property window. In the **Properties** dialog box that comes up, type:

**Sources:**

**U.S. Bureau of the Census, 1990**

**Banker and Tradesman Real Estate Transfer Database, 1987-1989**

Note that you can use the <Enter> key to insert line breaks in the text. Once you click **OK**, the text is placed wherever you clicked in the layout window. You can move this text by dragging it with the mouse. You can double click on the text, bring up the property window and change the font and size until you are satisfied.

In the same way, we can add two subtitles. Underneath the title **Lab Exercise 1** add two subtitles in smaller text that read "Median Household Income in Cambridge, MA in 1990" and "Housing Sales in Cambridge, MA in 1989." Also add your name and today's date somewhere on the map.

Feel free to move and resize the elements to make your map look more attractive. You can also go back to the symbology window to adjust the existing symbology. Once you change the symbology, the change will be applied to the map layout automatically. You don't need to create the layout again. Try your best to make the map readable and attractive. Although it is hard to make a real attractive one this time, we expect your map should be much better than than Fig. 16.

Before you print out the map, make sure that none of the visible features in your map are selected -- these will show up highlighted in yellow on the map. If they are, they will also show up highlighted on your printout, which you probably don't want. .

Now you can print with confidence. Select **Print** from the **File** menu. Click **Setup** button and select the name of the printer in the room where you are doing the lab and click the **OK** button. Make sure your printout actually shows up! Getting acceptable paper output isn't always as easy as you'd think. You can't be sure it will work until you have the piece of paper in your hands. Make sure to turn your printout in.

### **Printing Notes**

When printing directly to a printer, make sure to select the correct printer. When saving your maps to a file for later printing or use in a graphics or paint package, click on the "Print to File" option to save the file to disk in EPS format for printing or export later. Make sure this filename ends with **.eps** or **.ps**.

## **V. Save Your Work**

Remember to save your work again by clicking the disk icon. ArcGIS can save the status of your session in the map document file, which typically has a **.mxd** extension. The map document file does not contain the data sets itself, but rather stores pointers to their locations. Your thematic map properties and layouts are also stored in the document file.

After you have done more work on a map document that you previously saved, you could save your changes under a different name by using **Save As** instead. Try this now, saving a copy of your map document as **lab\_1copy.mxd**. Saving variations of your map documents under different filenames is a good practice. The map document files

themselves are typically not too large, so you making lots of map document files should not waste too much disk space.

Next time, when you reopen the map document file with ArcMap, it should look just the same as when you saved it this time. You can try it now if you have additional time.

## **VI. If You Finish Early**

If you finish the lab assignment with time to spare, you may want to return to this layout window and experiment with the other templates and various styles of the map components.

Checking out more of the ArcGIS online help (started from the **Help** menu) is also a good idea. Throughout the class we will expect you to try to answer your own questions about ArcGIS by consulting the online help and the class notes *before* asking the class staff. Of course, if you get stuck, we are here to help.

## **VII. Lab Assignment**

Turn in the printout of the layout you produced to your instructor. The lab assignment is due by the **START** of class in **Lecture 3**.

---